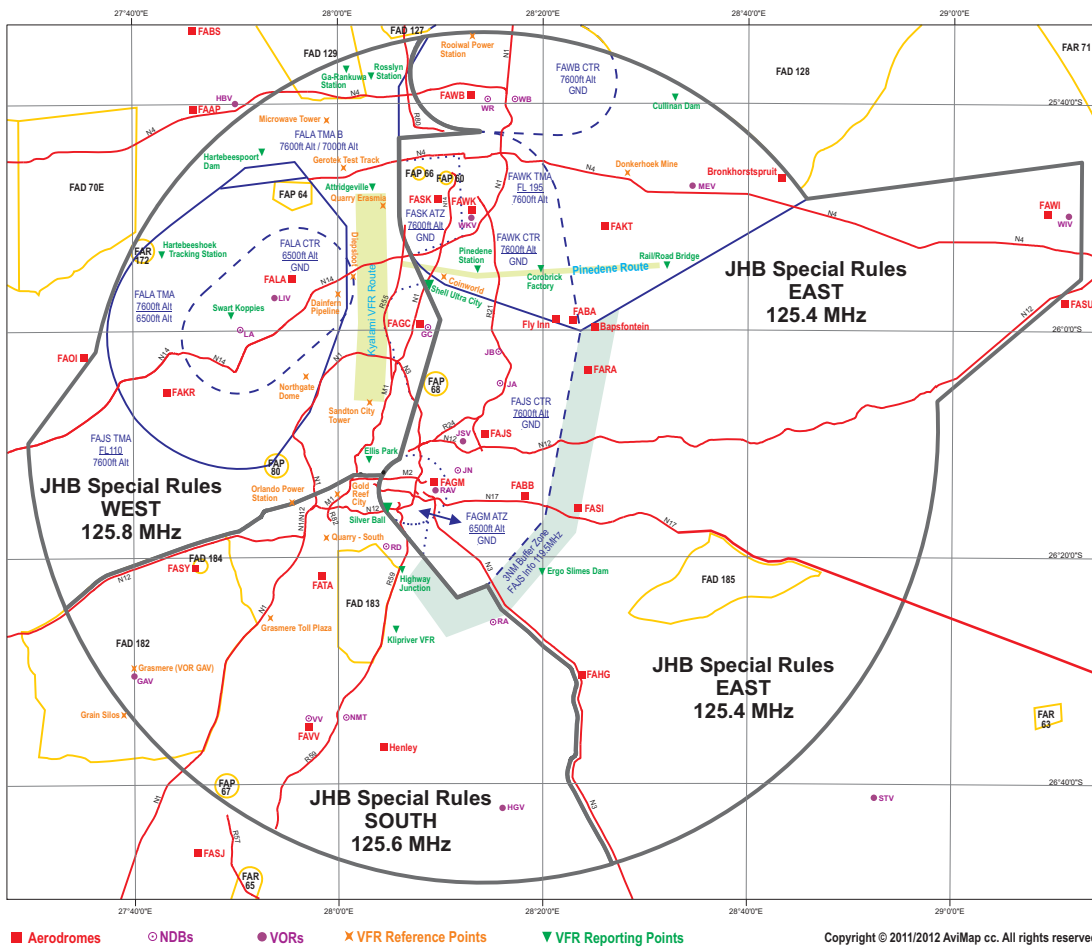


## JHB Special Rules Area



## THE FAJS CTR BUFFER ZONE RULES

<u>Time</u>	<u>Contact</u>	<u>Frequency</u>
0430-1600	Johannesburg Information *	119.5MHz
1600-0430	Johannesburg Area	126.7MHz

\* Pilots are advised to communicate with Johannesburg Information on 127.4MHz if there is no reply on 119.5MHz.

The Buffer Zone is situated within 3NM of the JHB CTR and it's vertical limits are calculated from ground to 7500ft altitude. It extends from a point on the Rand ATZ, South & East of the JHB CTR to a point on the Waterloof CTR. Traffic routing outside of the Buffer Zone while flying in the Special Rules Area, and routing from West to East or vice versa, need to identify the following landmarks as visual reference points which includes approximate distance outlining the boundary extremity of the Buffer Zone in order to remain clear of this airspace.

**NOTE** - Items 1 and 7 listed below indicate the beginning of the Buffer Zone which borders on the JHB CTR boundary extremity:

1. Intersection of the Sybrand van Niekerk Freeway and Kliprivier Drive interchange
2. South of the Kliprivier station
3. S / SE of the R550 and Ergo Slimes Dam
4. S / SE of the R23 / Alberton Road interchange
5. East of Kwa-Thema
6. East of the Garsfontein / Pretoria Road junction
7. Intersection of the Delmas Road (R50) and the Pretoria Road (R51)

## FARs, FAPs and FADs

ID	Upper/Lower Limits	Name	Remarks
FAR 63	FL80/GND	Secunda Explosives Factory	NO-Fly w.p.a.
FAR 65	1000ft/GND	Sasolburg	NO-Fly w.p.a.
FAR 71	FL195/FL105	SAAF Transvaal Military FTA	NO-Fly w.p.a.
FAR 172	1000ft/GND	Hartbeeshoek Comm Station	NO-Fly w.p.a.
FAP 60	1000ft/GND	Voor trekker Monument	NO-Fly zone
FAP 64	6500ft/GND	Pelindaba Nuclear Energy Plant	NO-Fly zone
FAP 66	1000ft/GND	Pretoria Iscor Iron & Steel Works	NO-Fly zone
FAP 67	1000ft/GND	Vanderbijlpark Steel Works	NO-Fly zone
FAP 68	1000ft/GND	Modderfontein Explosives Factory	NO-Fly zone
FAP 80	1000ft/GND	Dantex Explosives	NO-Fly zone
FAD 70-E	FL100/GND	Magaliesburg FTA	Bcst 124.8
FAD 127	FL100/GND	Pretoria FTA 1	Bcst 124.4
FAD 128	FL100/GND	Pretoria FTA 2	Bcst 124.4
FAD 129	7500ft/GND	Bris / Grand Central FTA	Bcst 124.8 / Listen 125.8
FAD 182	FL100/GND	Johannesburg FTA	Bcst 122.35
FAD 183	6500ft/GND	Johannesburg Helicopter FTA	Bcst 124.4
FAD 184	FL90/GND	Syferfontein Aerobatic Area	Bcst 122.35 / Before entry call JHB Radar 124.5/123.7
FAD 185	7600ft/GND	East Rand FTA	Bcst 124.4

Abbreviations: FAR (Restricted Area), FAP (Prohibited Area), FAD (Danger Area), w.p.a. (without prior authority), Bcst (broadcast)

## PINEDENE RULES

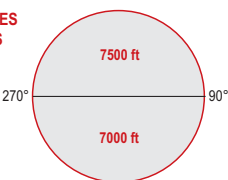
**Clearance has to be obtained from Waterkloof ATC prior to entering the Pinedene VFR Route.**

1. Flights are restricted to 6000ft Alt Max (Waterloof CQN) whilst within controlled airspace.
2. Flights are conducted by day and under VFR. Flights for which IFR flight plans have been submitted will not be permitted to make use of the route to bypass departure delays.
3. Pilots must comply with the stipulated frequency requirements at all times and broadcast their intentions on the applicable JHB Special Rules Area frequency.
4. Pilots must broadcast their intentions on 120.65 MHz (Kitty Hawk Traffic) when East of the Waterloo CTR.
5. Pilots must call Grand Central on 122.8 MHz on exiting, or prior to entering the route from the West for traffic information.

## JHB SPECIAL RULES

### AREA - ALTITUDES

\* Less than 180 kts  
\* Landing lights on



If unable to comply  
remain 6 500ft

## WEST SECTOR

## EAST SECTOR

**SOUTH SECTOR** 125.6 MHz

## AREA FLIGHT INFORMATION SERVICE & AREA CONTROL CENTRES

<u>Location</u>	<u>Contact No.</u>	<u>Service Hours (UTC)</u>	<u>Frequency</u>
Johannesburg Central FIS/ACC	011-928 6454/5	24 Hours	120.3
Johannesburg East FIS/ACC	011-928 6454/5	24 Hours	129.1
Johannesburg West FIS/ACC	011-928 6454/5	24 Hours	118.5 / 118.55
Johannesburg North/NW ACC	011-928 6454/5	24 Hours	126.7
Johannesburg NE ACC	011-928 6454/5	24 Hours	128.9
Johannesburg SW ACC	011-928 6454/5	24 Hours	128.3
Johannesburg SE ACC	011-928 6454/5	24 Hours	132.15
Johannesburg South FIS (oh)	011-928 6454/5	24 Hours	119.5
Johannesburg North FIS (oh)	011-928 6454/5	24 Hours	127.4
Lowveld FIS (oh)	012-312 2389 or 015-799 2589	Mon-Fri 0600-1500" Sat & Sun 0700-1500"	119.0 / Secondary 129.4 119.0 / Secondary 129.4

\* After hours: Johannesburg - contact 126.7  
Weekends and Public Holidays service hours may be shortened. See ADs for information updates.

## JHB SPECIAL RULES

<u>Location</u>	<u>Description</u>	<u>Frequency</u>
Johannesburg Special Rules	East - Under TMA	125.4
Johannesburg Special Rules	West - Under TMA	125.8
Johannesburg Special Rules	South - Under TMA	125.6

All airfields not allocated a frequency	124.8MHz	<b>GFA Jhb and Bara box</b>  <b>122.35 MHz</b>
Below 1500ft outside controlled airspace	124.8 Mhz	
All General Flying Areas / P.E. GFA	124.4 / 124.2 MHz	
General Glider Activity (unless specified)	123.4 MHz	
General Chat Frequency	123.45 Mhz	

Whilst every care has been taken to ensure the accuracy of the data, the publishers and their advertisers cannot be held responsible for any information found to be incorrect and refers ALL users to the SACAA AIPs for verification. Copyright © 2011/2012 AviMap cc. All rights reserved. Tel: (011) 463 3539.