



FALA RWY 06/24 ANALYSIS

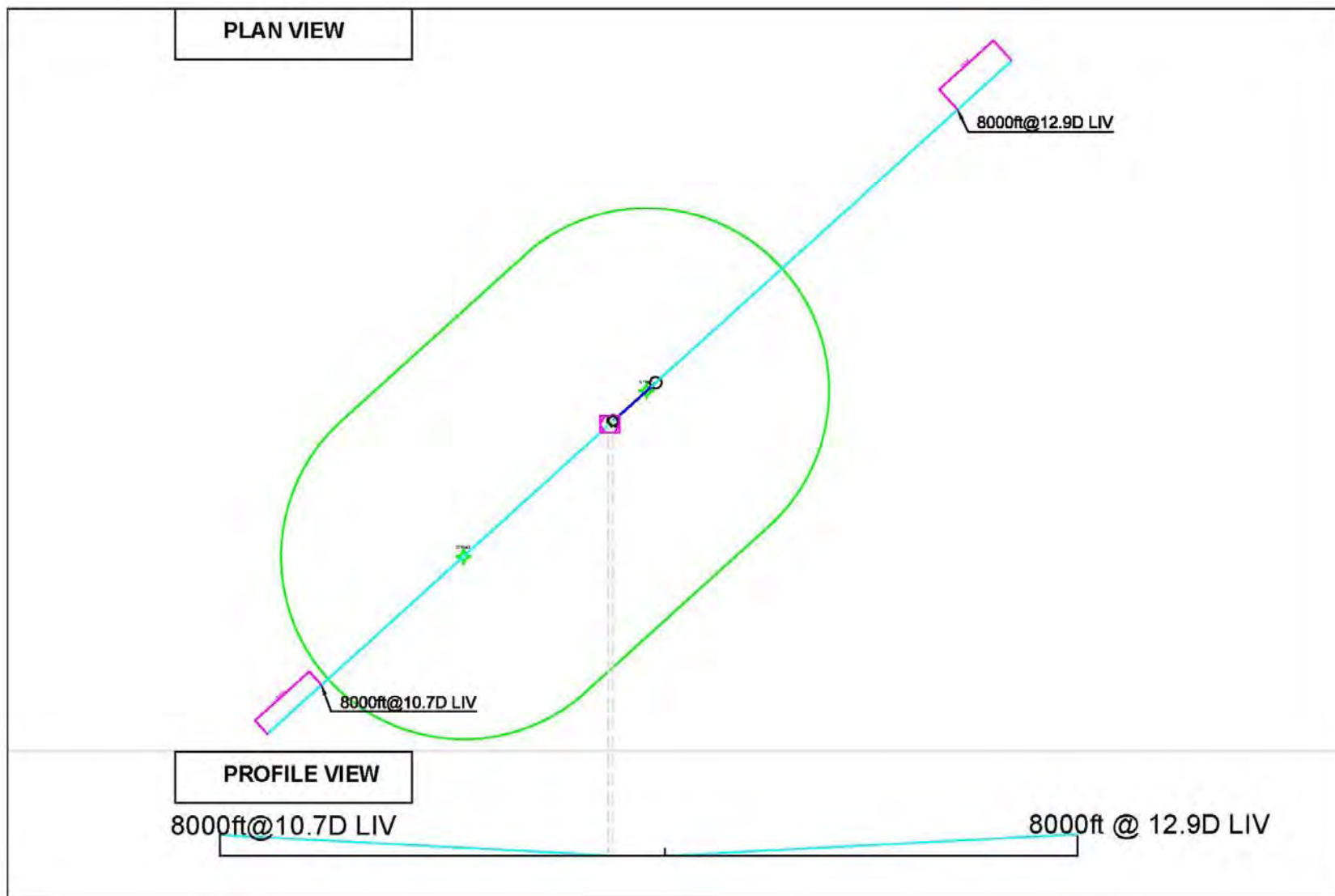
**COMPILED BY: MITCHELL NUNES
FLIGHT PROCEDURE SPECIALIST**

© ATNS 2012
PERMISSION FOR USE/COPY REQUIRED



FALA RWY 06/24 ANALYSIS

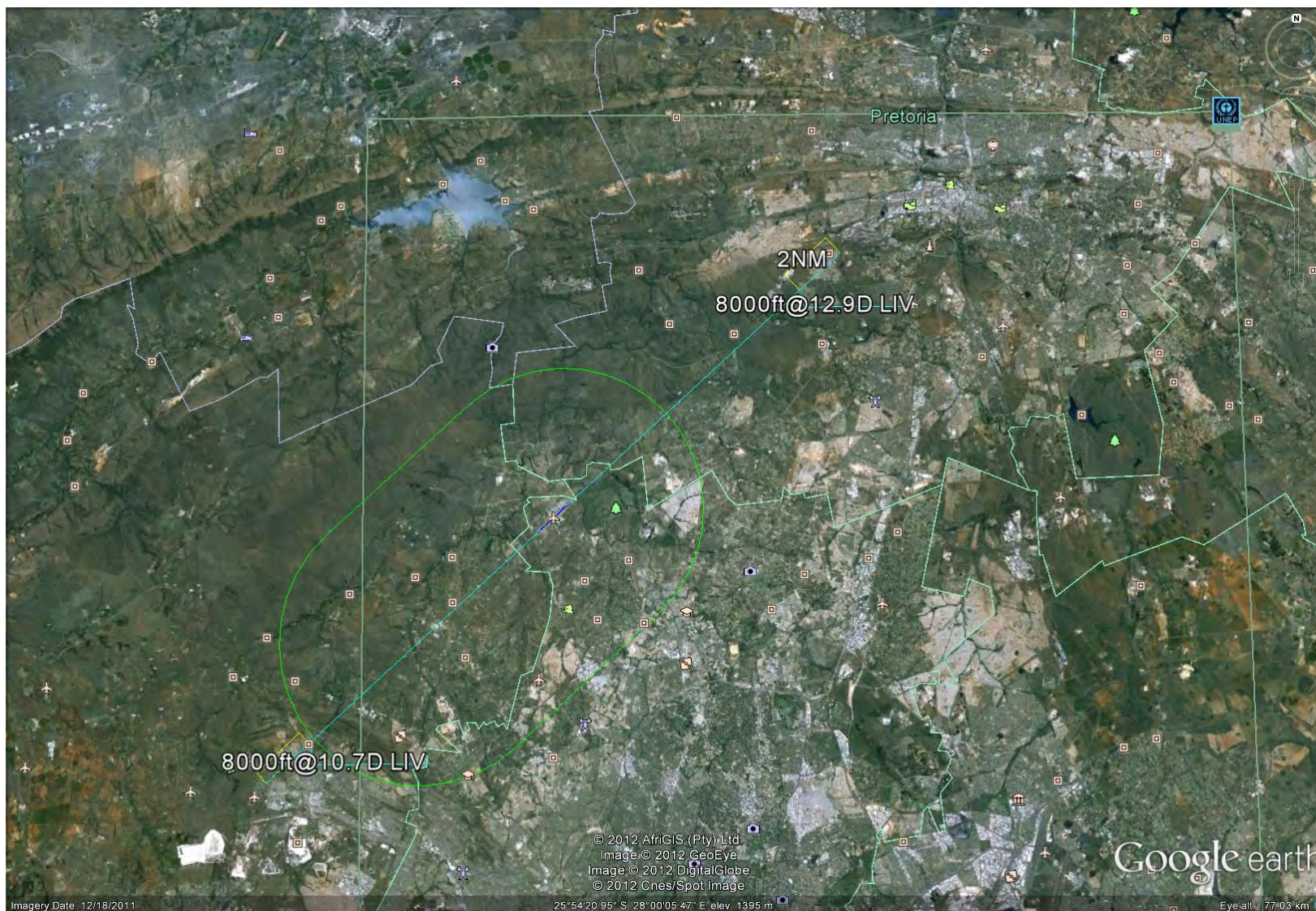
PLAN/PROFILE VIEW @ 3°





FALA RWY 06/24 ANALYSIS OVERVIEW

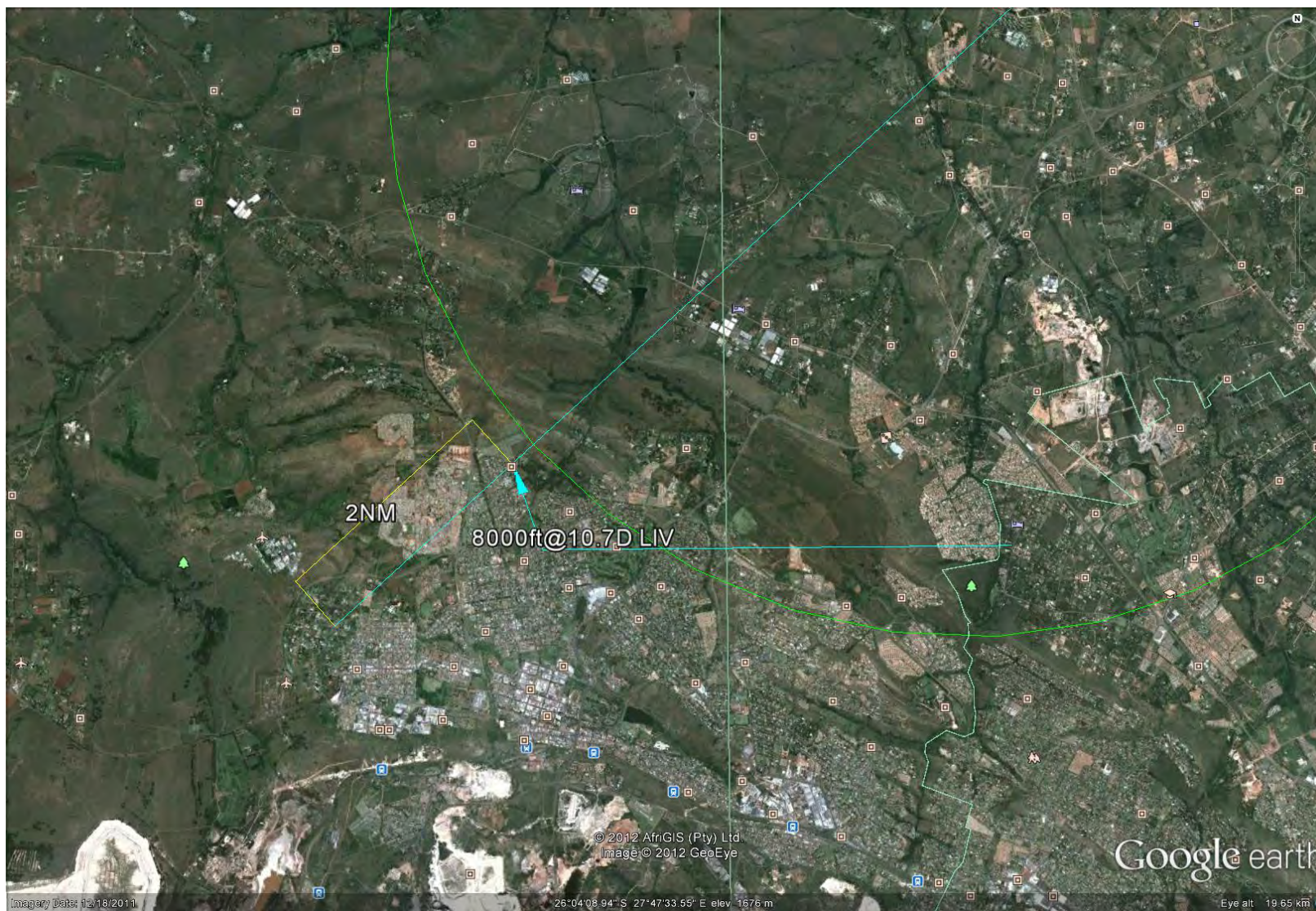
3rd ILS APPROACH





FALA RWY 06 ANALYSIS

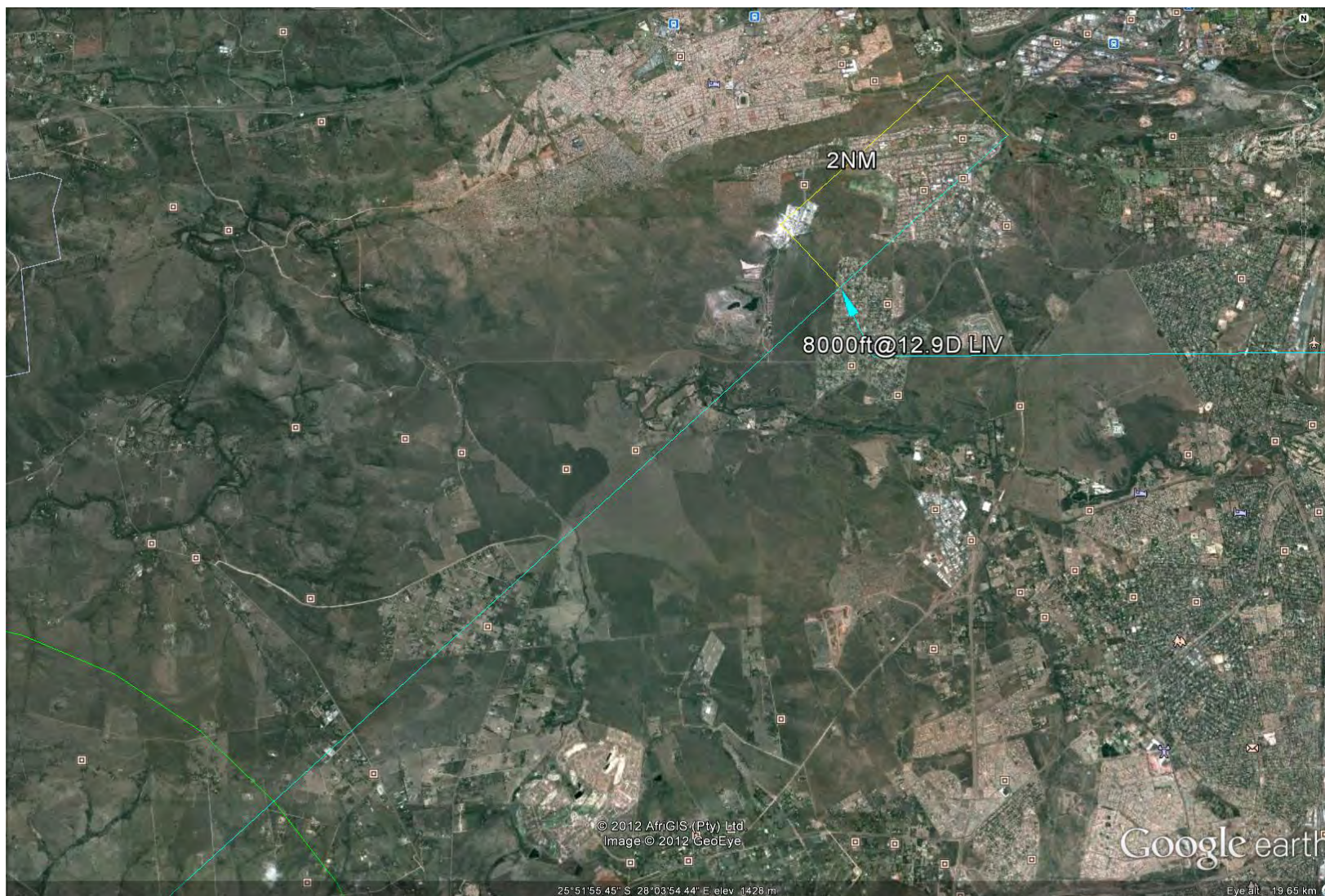
3° ILS APPROACH





FALA RWY 24 ANALYSIS

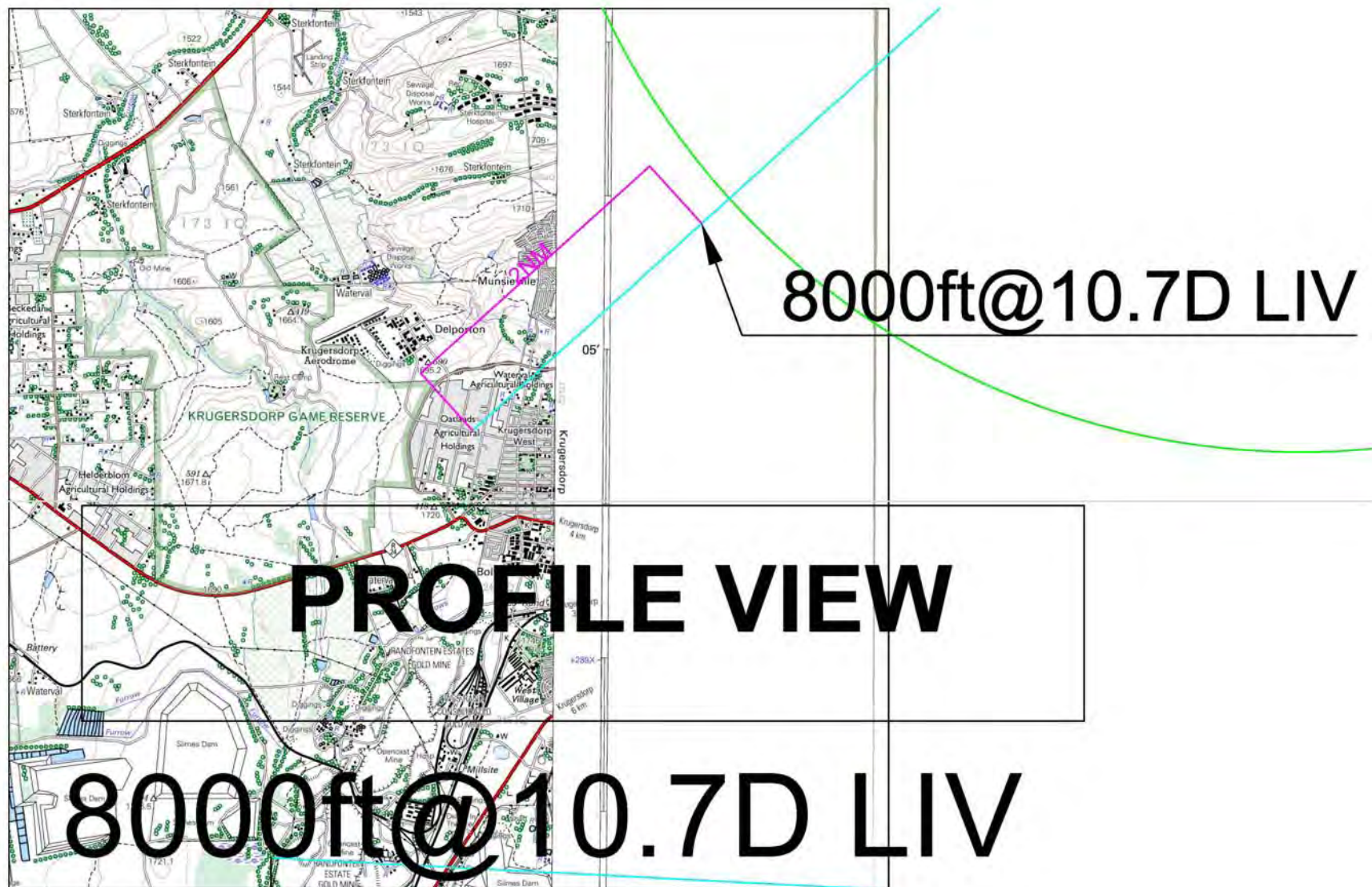
3° ILS APPROACH





FALA RWY 06 ANALYSIS

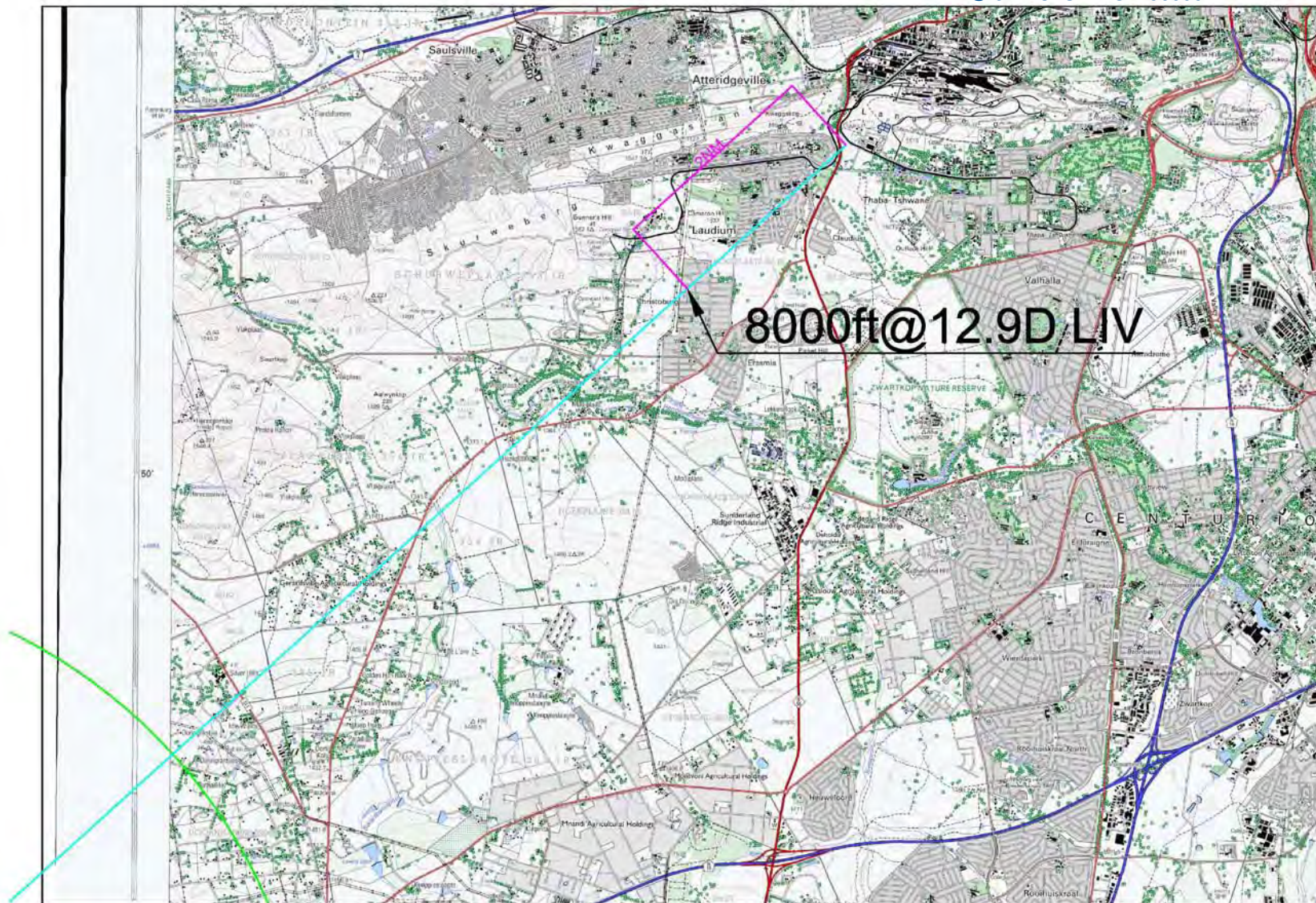
RWY 06 @ 3° INCLUDING 1:50000 MAP





FALA RWY 24 ANALYSIS

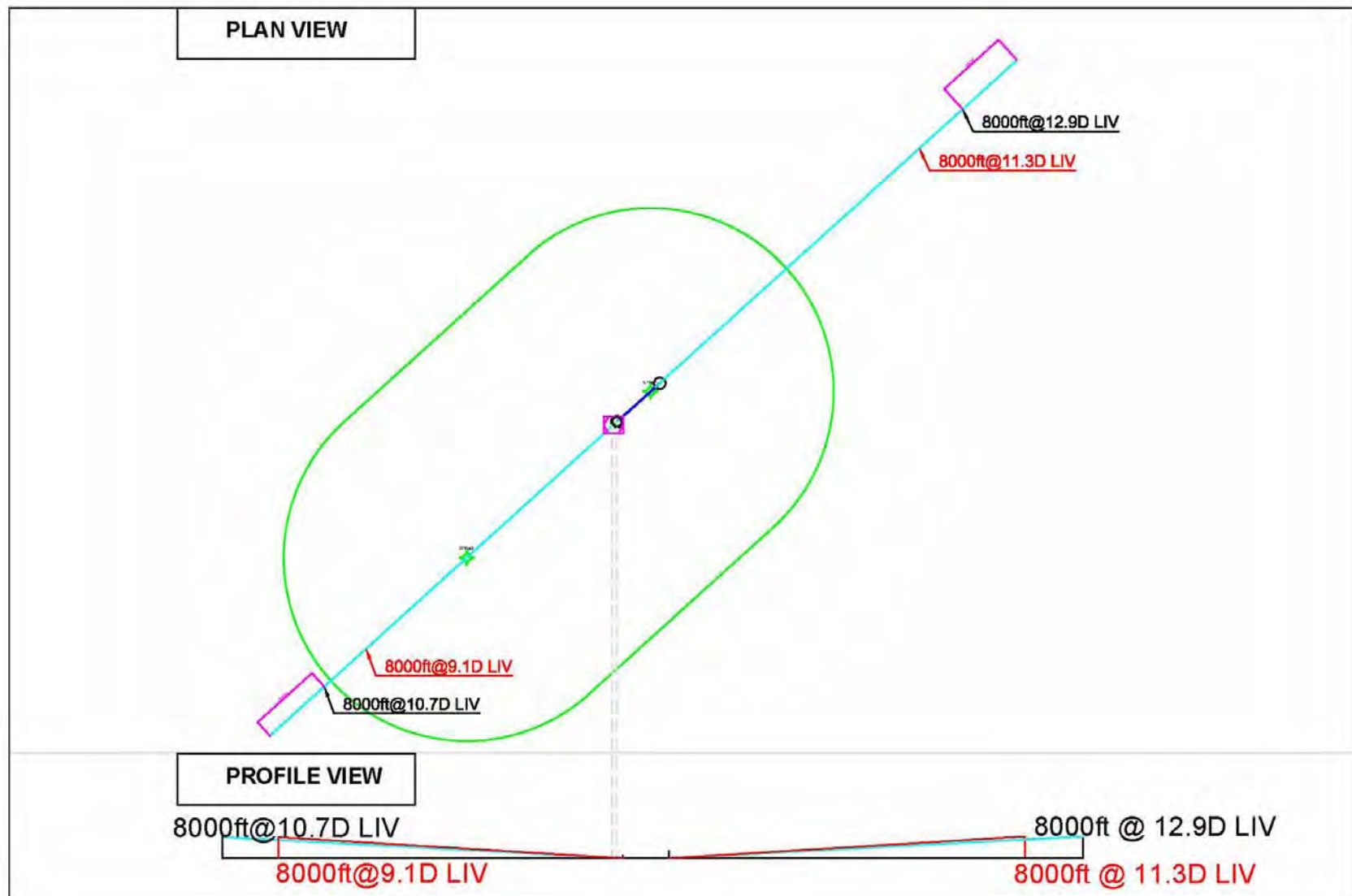
RWY 24 @ 3° INCLUDING 1:50000 MAP





FALA RWY 06/24 ANALYSIS

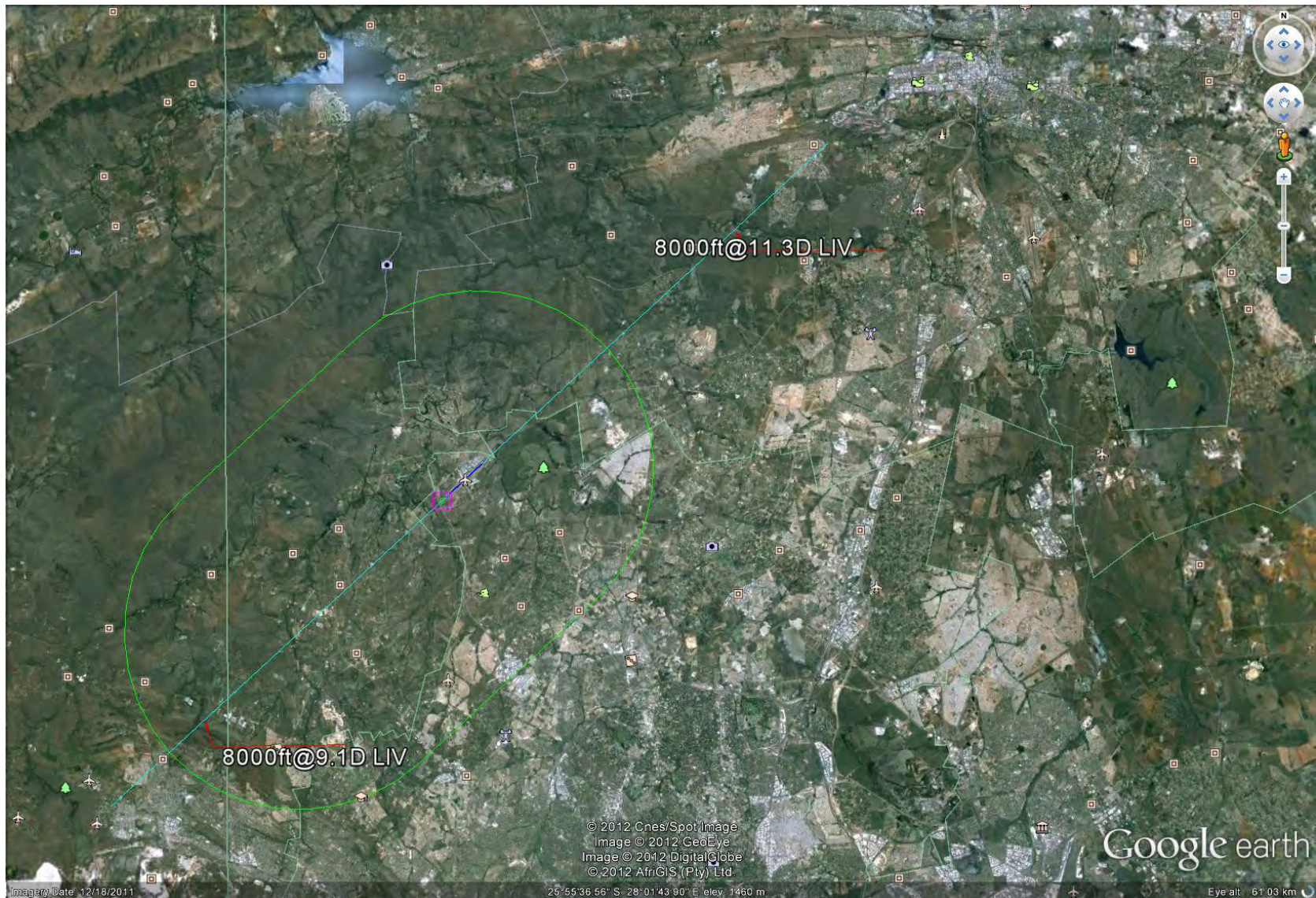
NPA PLAN/PROFILE VIEW @ MAX GRADIENT(6.1%) - RED





FALA RWY 06/24 ANALYSIS OVERVIEW

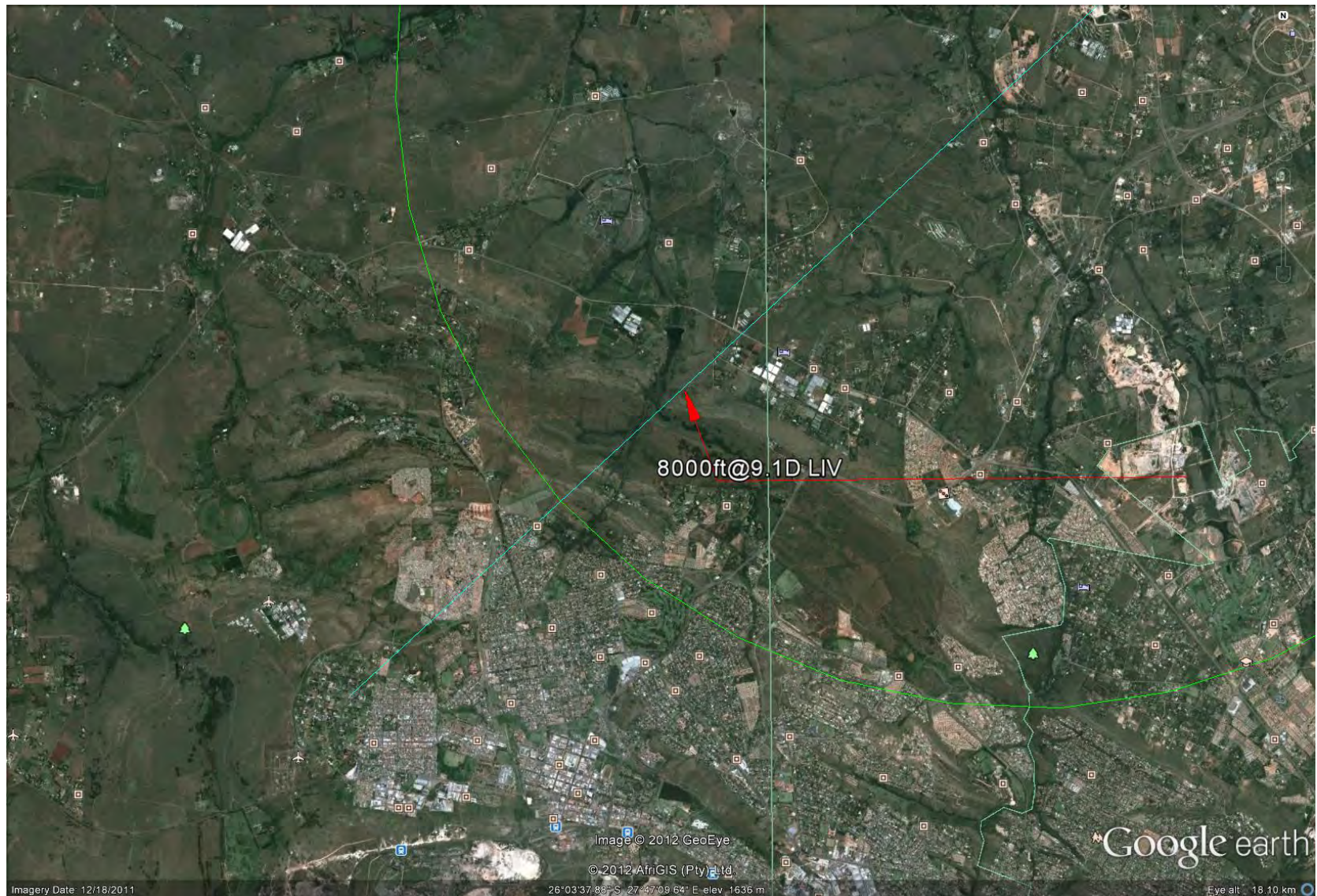
6.1% NPA APPROACH





FALA RWY 06 ANALYSIS

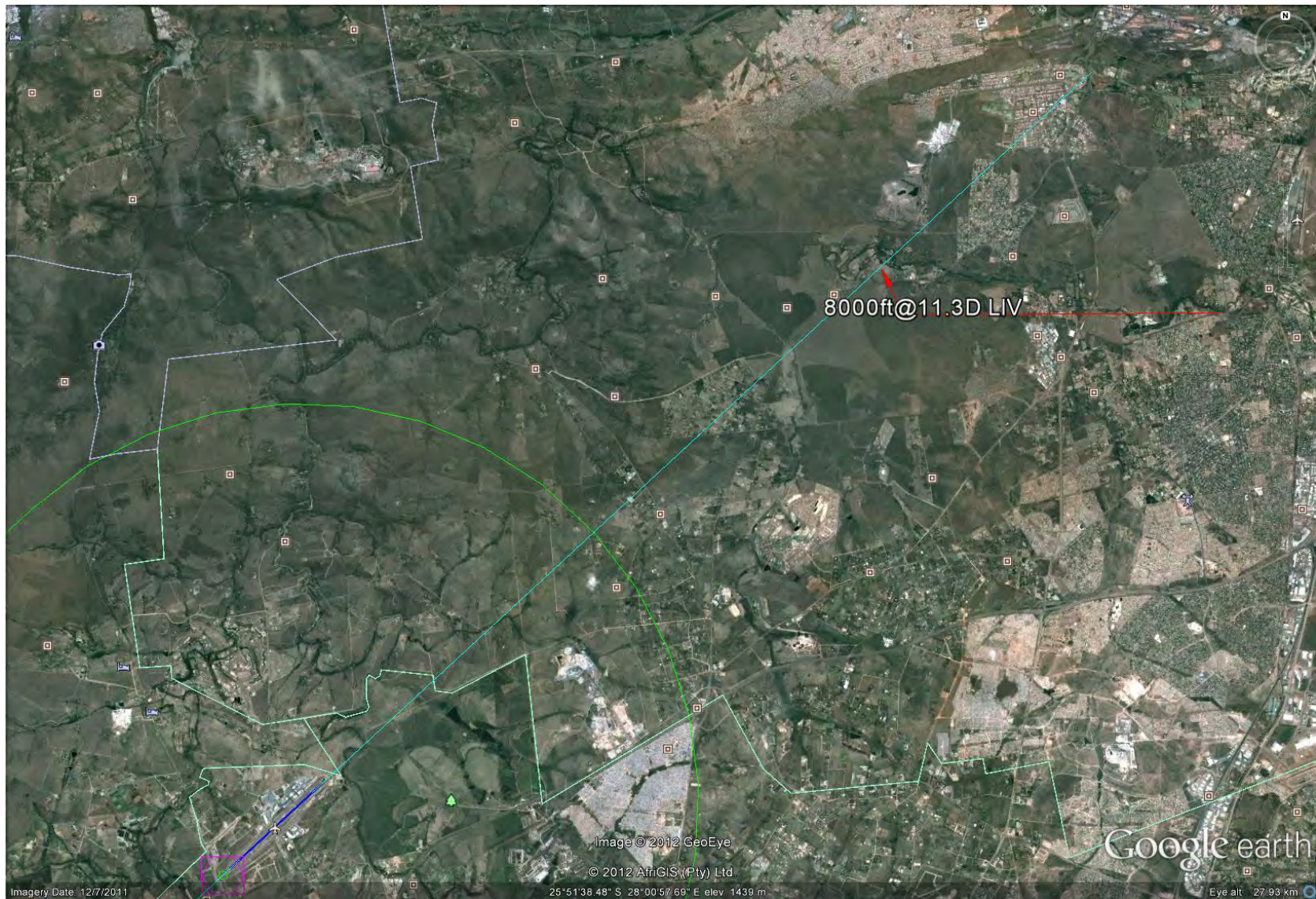
6.1% NPA APPROACH





FALA RWY 24 ANALYSIS

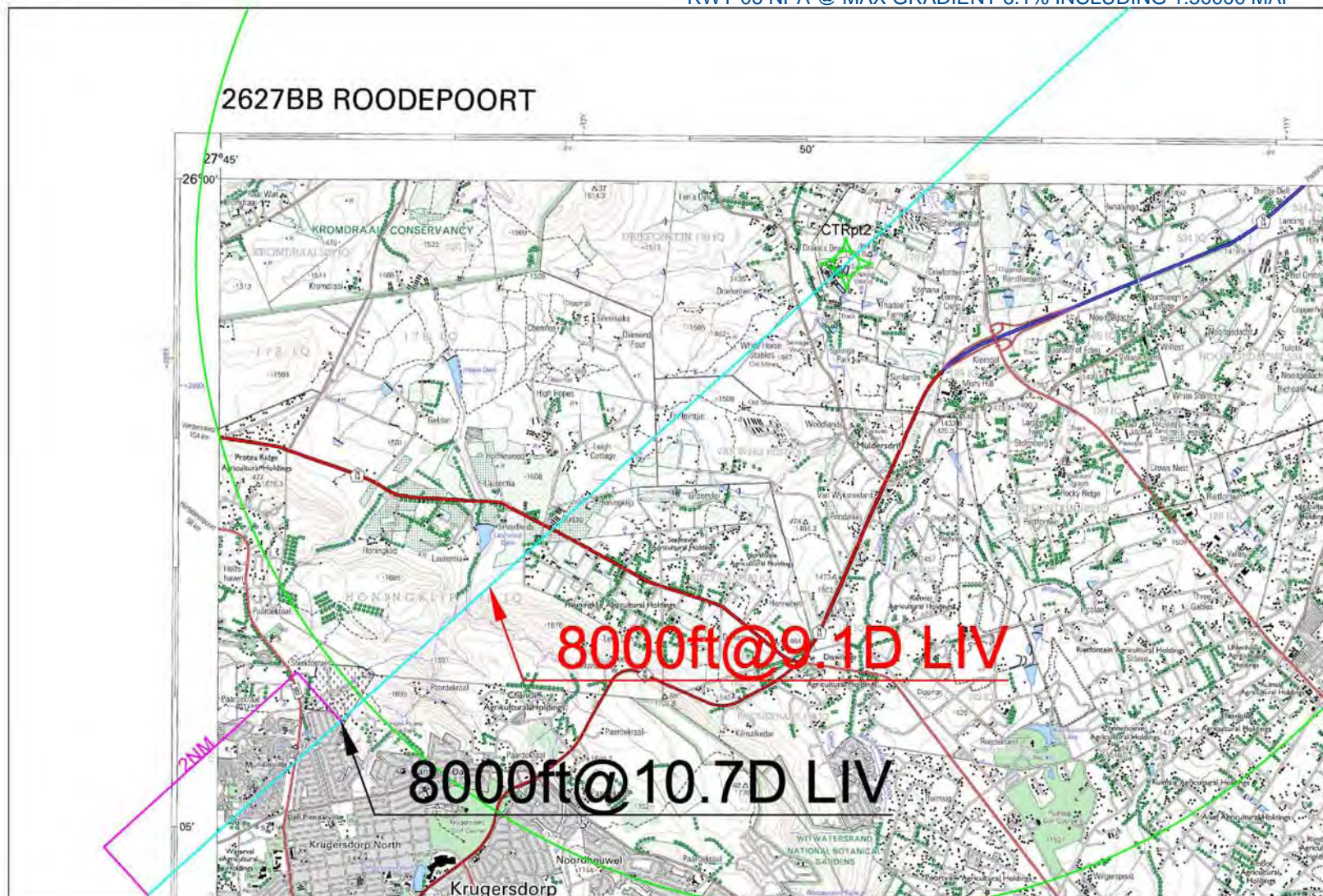
6.1% NPA APPROACH





FALA RWY 06 ANALYSIS

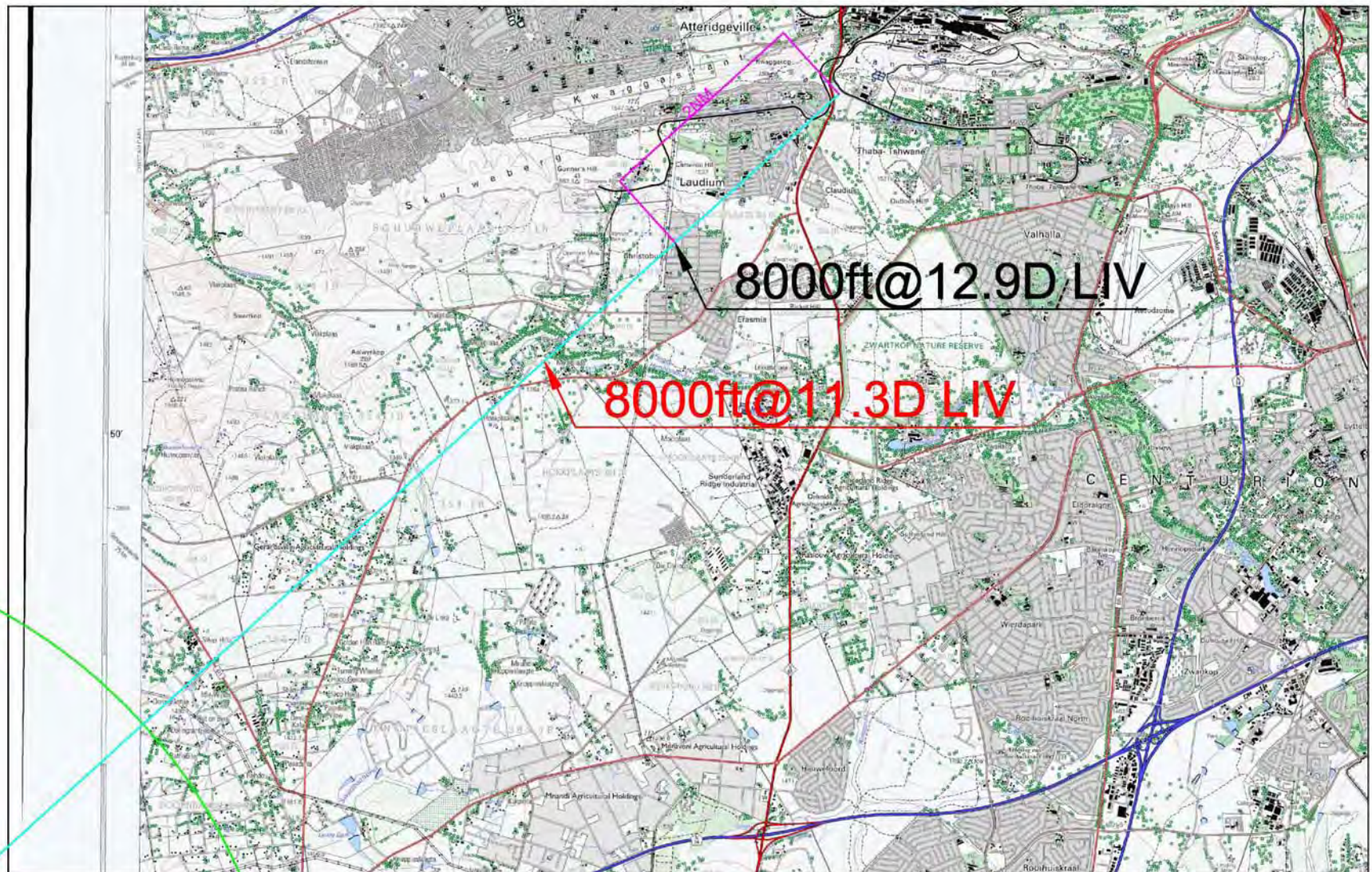
RWY 06 NPA @ MAX GRADIENT 6.1% INCLUDING 1:50000 MAP





FALA RWY 24 ANALYSIS

RWY 24 NPA @ MAX GRADIENT 6.1% INCLUDING 1:50000 MAP





REFERENCES

SOURCE DOCUMENTATION/INFORMATION

- ICAO DOCUMENT 8168 VOL I
- RSA AIP
- FALA 2011 ATNS MAINTENANCE SURVEY

SOFTWARE USED

- GOOGLE EARTH
- AUTOCAD CIVIL 3D 2010
- PDTOOLKIT PROCEDURE DESIGN SOFTWARE
- UTM PROJECTION WGS 84 (ZONE 35S)



END

Thank you