



Aquila

Parts Catalogue

Issue 1 – 25.05.05

21 Monaco Place, Westmead, Kwa-Zulu Natal, South Africa

PO Box 214, Gillitts, 3603, South Africa

Tel: +27 (0)31 7002806 Fax: +27 (0)31 7005502

Website: www.solowings.co.za e-mail: info@solowings.co.za

CONTENTS

| | |
|--|--------------|
| GENERAL ARRANGEMENT | 1-3 |
| | |
| COMMON AIRFRAME | 4-31 |
| Front end | 4-8 |
| Elbow | 9-10 |
| Airfoil | 11-12 |
| Lower boom assembly, seat bracket (rear steering optional) | 13-15 |
| Lower boom, tank bracket, seat belt assembly | 16-17 |
| Pylon | 18-19 |
| Rear axle | 20-21 |
| Rear shock | 22-23 |
| Rear mudguards & rims | 24-25 |
| Fairing | 26-27 |
| Seat & Panniers | 28-29 |
| Propellers | 30-31 |
| | |
| 503 & 582 POWERED AIRCRAFT | 32-44 |
| 503/582 Fuel system | 32-33 |
| 503/582 Engine mount | 34-35 |
| 582 Power plant | 36-39 |
| 503 Power plant | 40-41 |
| Instruments & electrical | 42-44 |
| | |
| 912 POWERED AIRCRAFT | 45-53 |
| 912 Fuel system | 45-47 |
| 912 Power plant | 48-50 |
| 912 Radiator mounts | 51-53 |

DISCLAIMER

This parts catalogue is to assist Aquilla owners to identify items that may be required for spare parts. Approved changes may have been made to the aircraft prior to and after this set of illustrations was created. Full comparison and identification must be ensured before use.

Solo Wings is in no way responsible for the quality of workmanship of people that use this manual, and all persons must abide by local regulations regarding maintenance of aircraft.

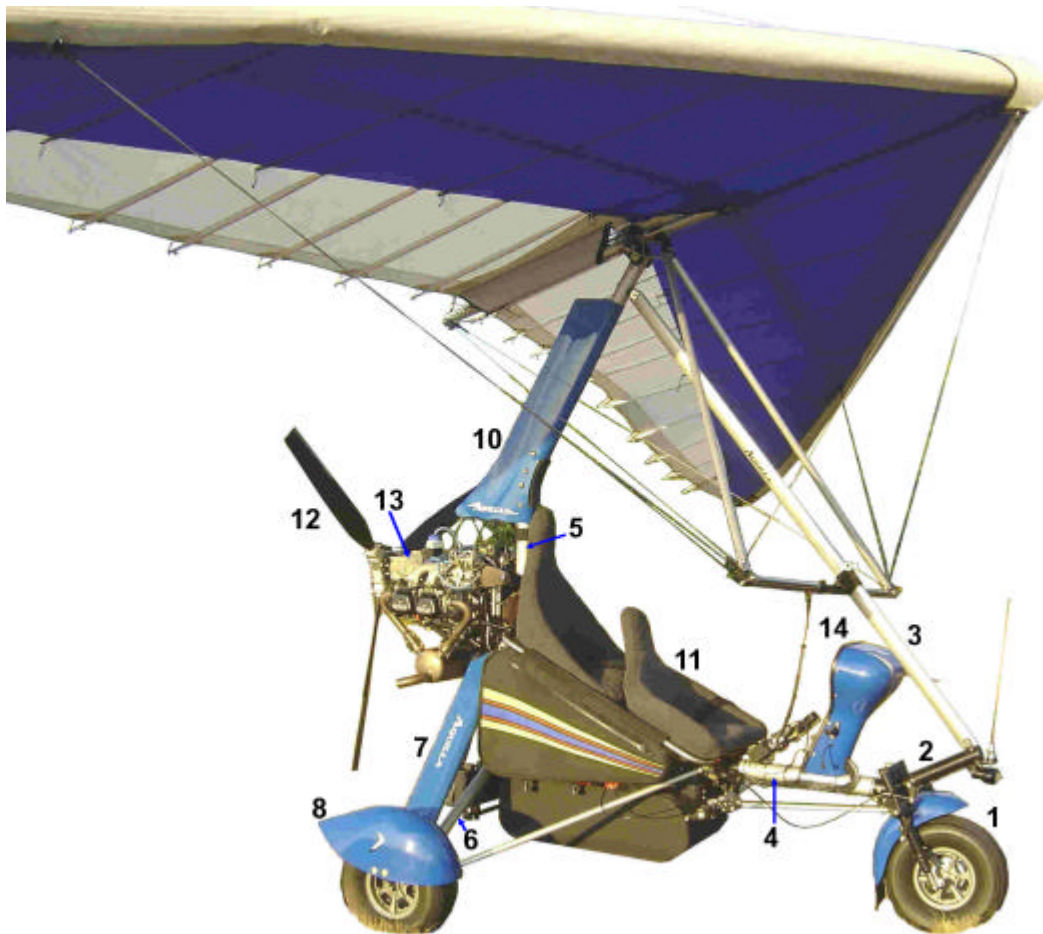
NOTE

Some of the components itemised are not available to be sold as separate parts but have to be purchased as complete units.

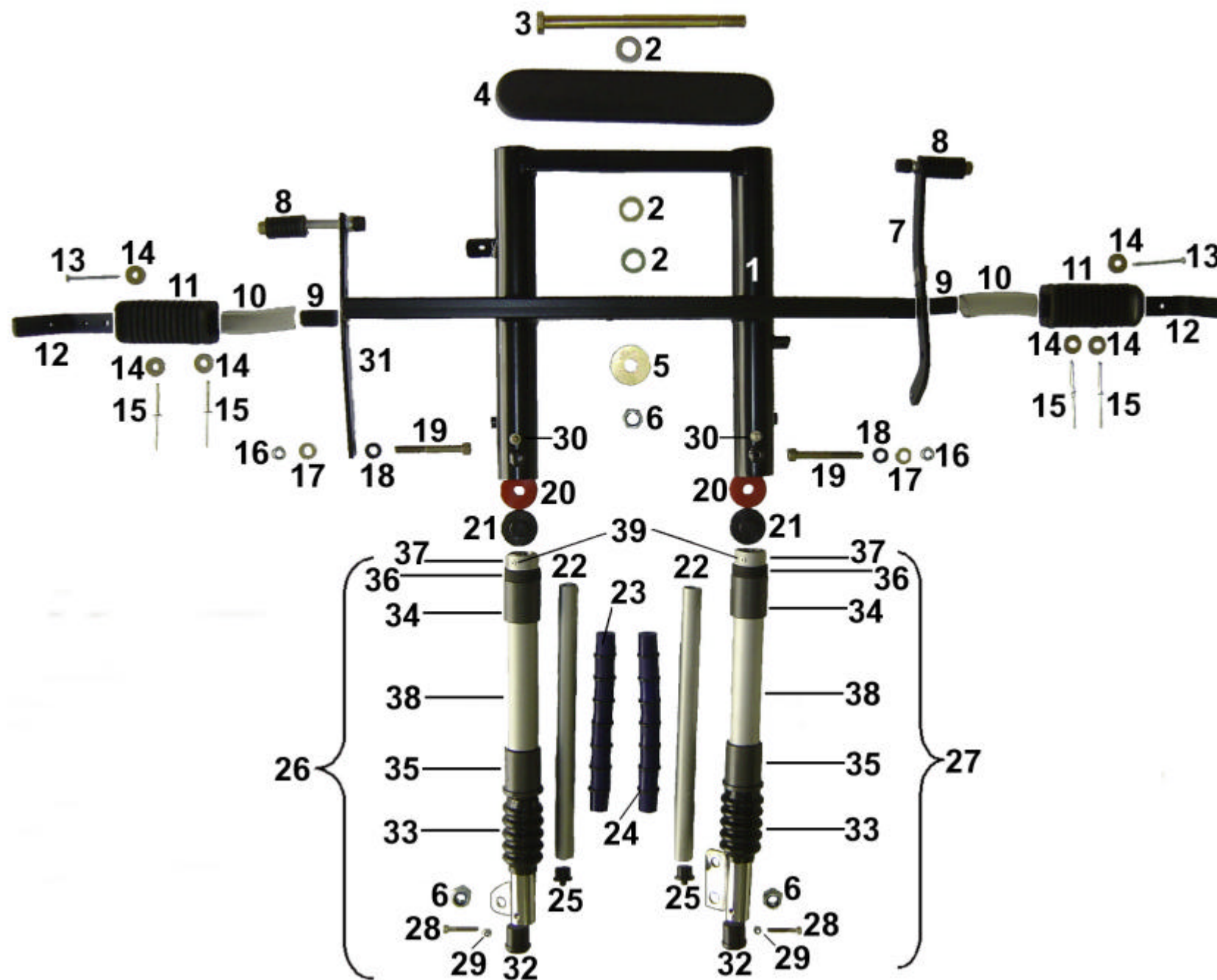
AQUILLA TRIKE – GENERAL ARRANGMENT



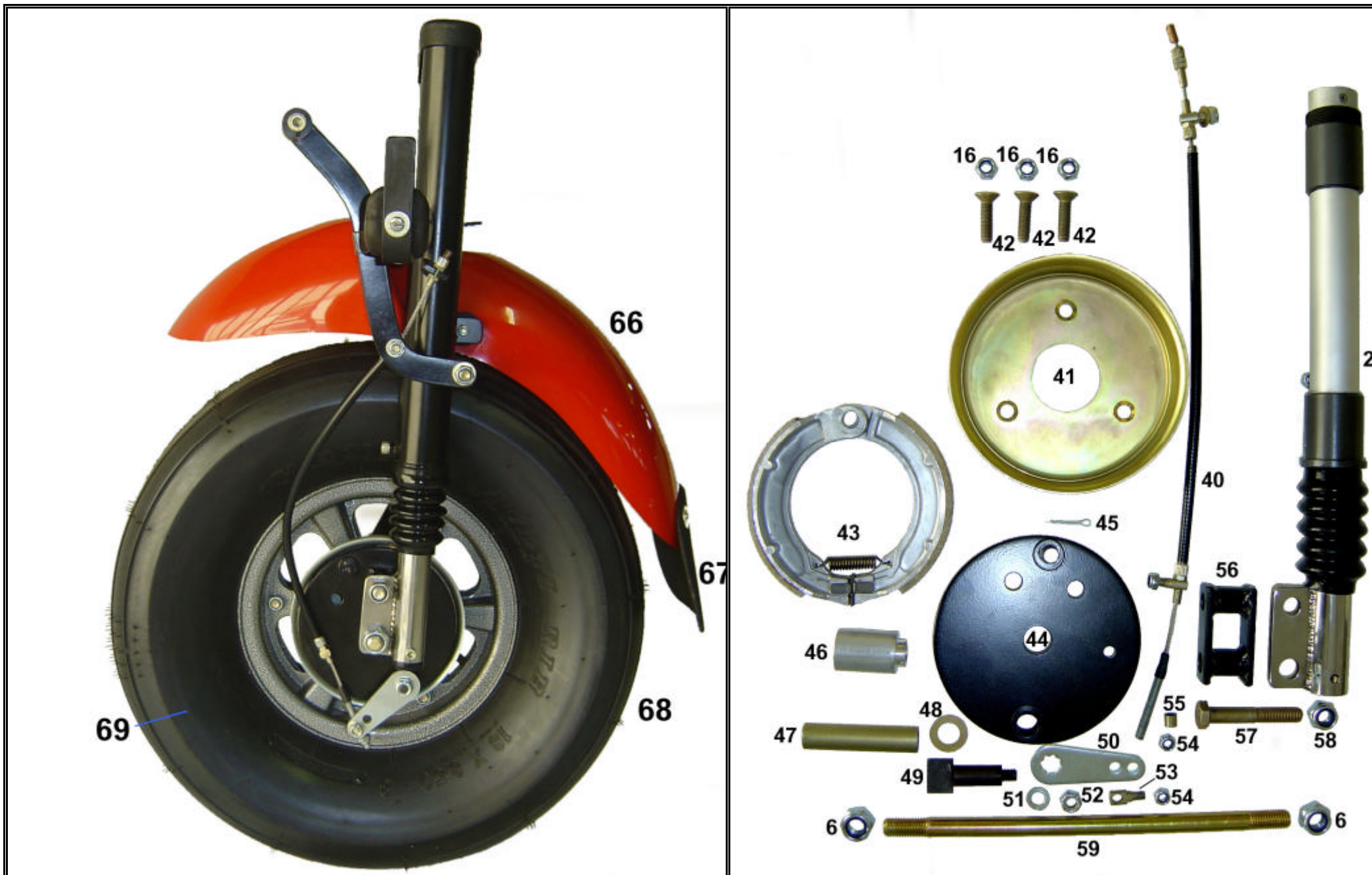
AQUILLA TRIKE – GENERAL ARRANGMENT

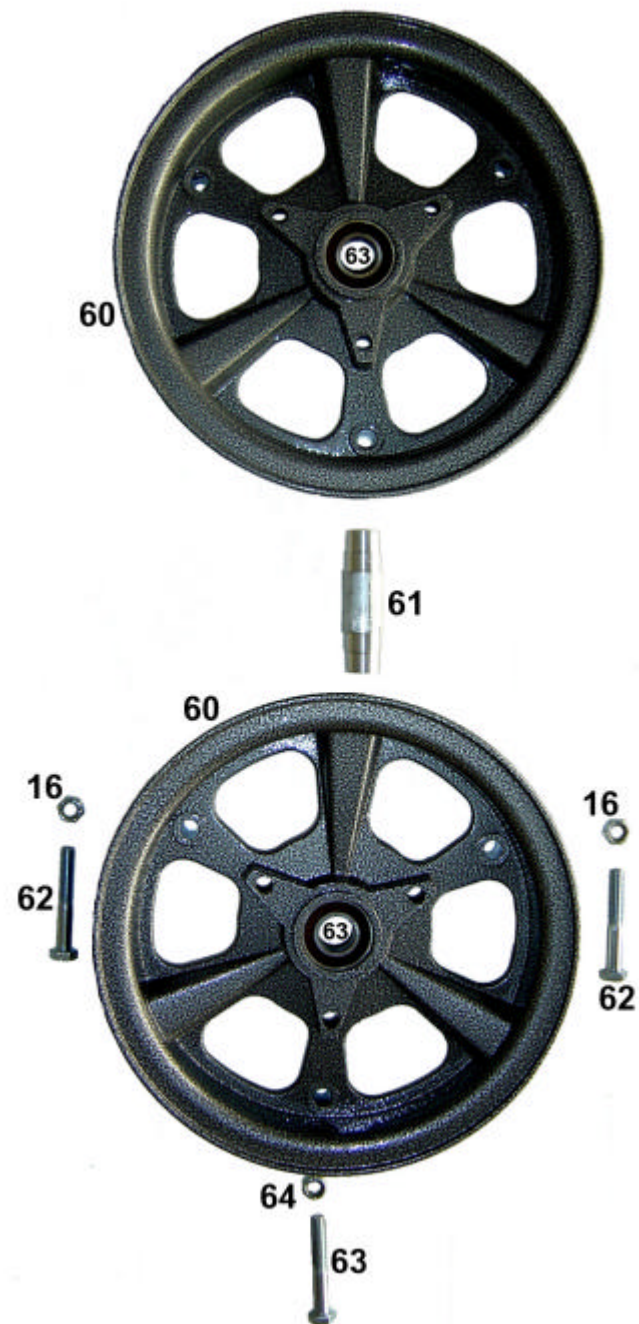
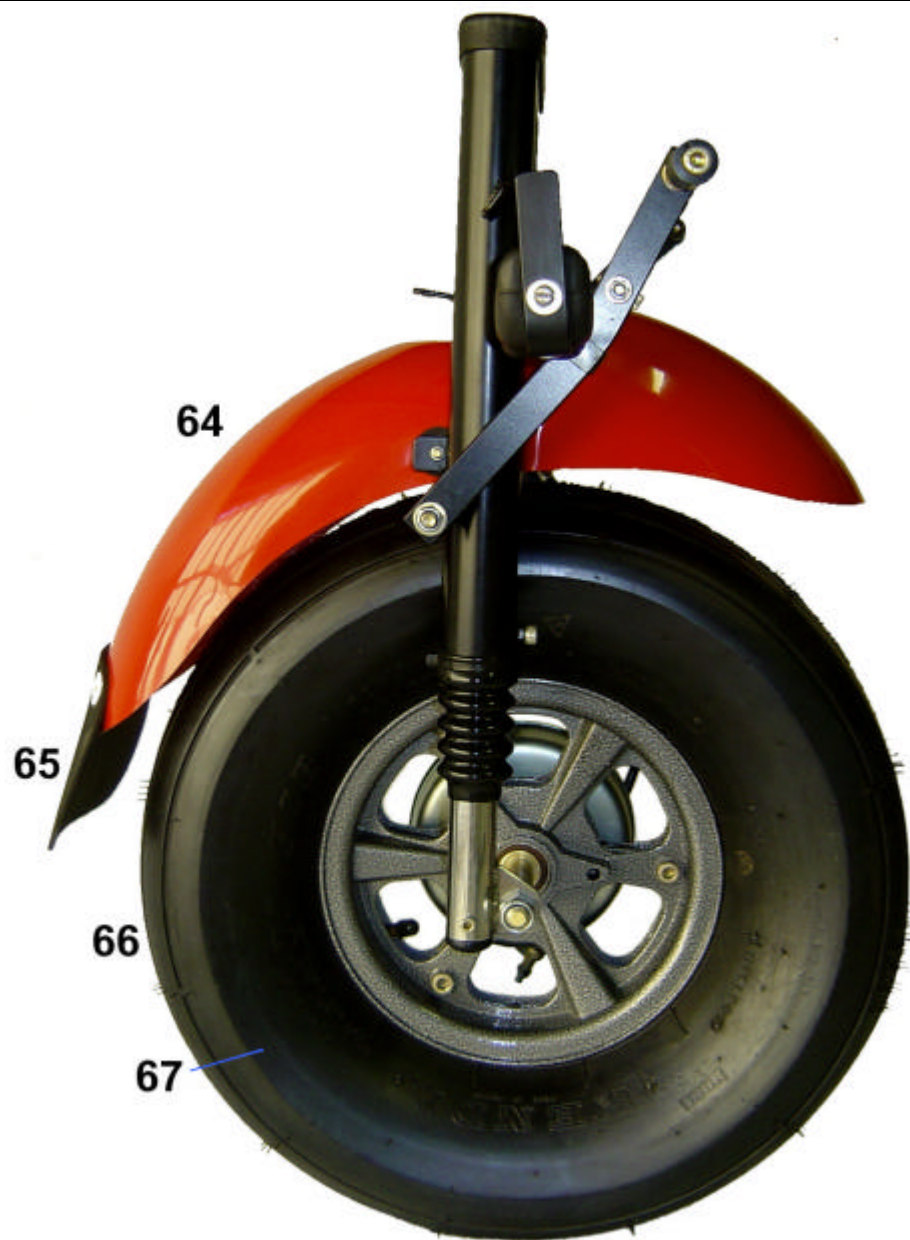


| ITEM | DESCRIPTION | |
|------|----------------|--|
| 1 | Front end | |
| 2 | Elbow | |
| 3 | Airfoil | |
| 4 | Lower boom | |
| 5 | Pylon | |
| 6 | Rear axle | |
| 7 | Rear shock | |
| 8 | Rear mudguards | |
| 9 | Fairing | |
| 10 | Pylon fairing | |
| 11 | Seats | |
| 12 | Propeller | |
| 13 | Power plant | |
| 14 | Instrument pod | |

AQUILLA FRONT END – FORK & SHOCK ASSEMBLY

AQUILLA FRONT END – BRAKE SYSTEM

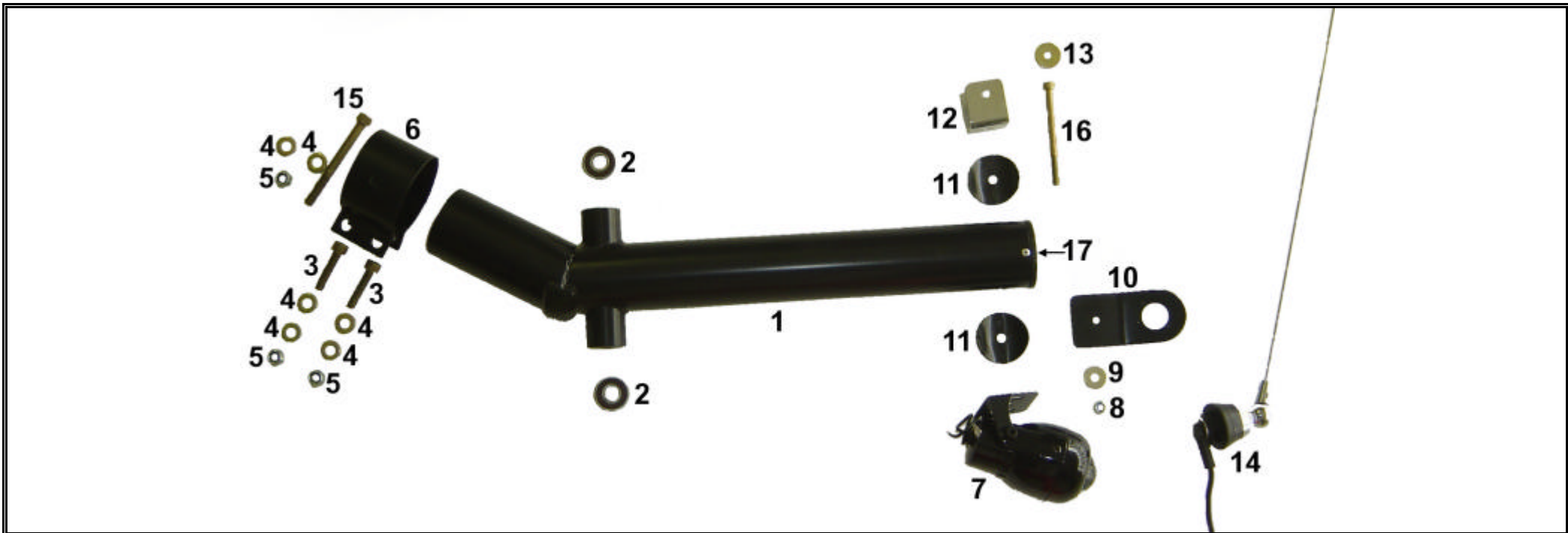
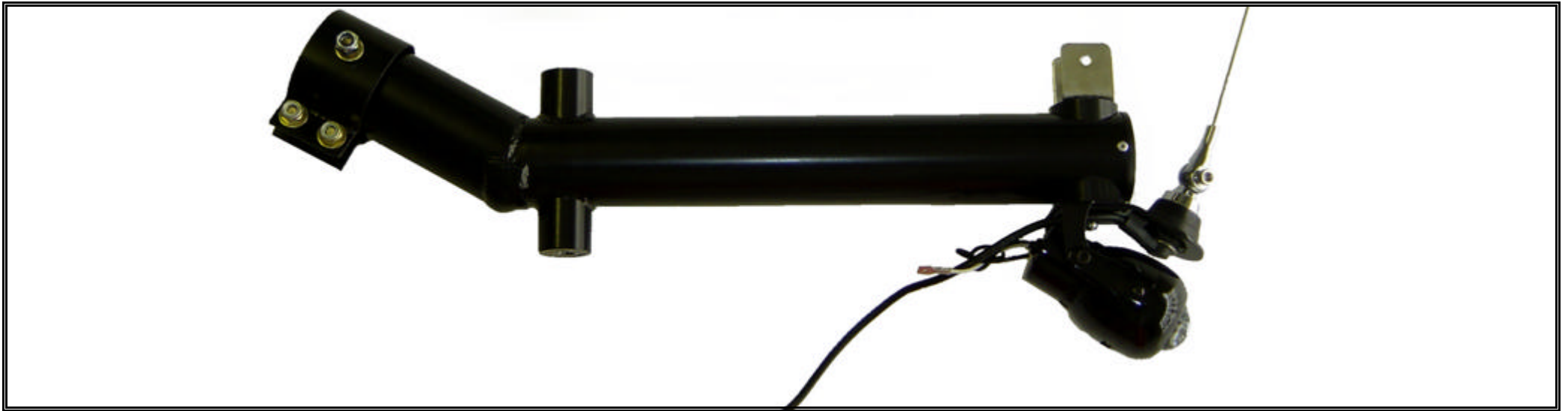




| ITEM | DESCRIPTION | |
|------|---------------------------------|--|
| 1 | Standard fork | |
| 1 | Extra large fork | |
| 2 | 12 x 24 x 1.6 washer (3) | |
| 3 | Pivot bolt M12 x 190 | |
| 4 | Fork top cover | |
| 5 | 12 x 38 x 1 washer | |
| 6 | M12 nylock (5) | |
| 7 | Brake lever | |
| 8 | Brake / throttle rubber | |
| 9 | Footrest plug (2) | |
| 10 | Spacer 22.5OD 16.8ID (2) | |
| 11 | Footrest rubber (2) | |
| 12 | Footrest stopper (2) | |
| 13 | 3 x 50 Self tapping screw (2) | |
| 14 | 6 x 19 x 1.6 washer (6) | |
| 15 | Pop rivet 49 x 28.2 (4) | |
| 16 | M8 nylock (7) | |
| 17 | 8 x 17 x 1 washer (2) | |
| 18 | Spacer 15.3 x 6 x 8 (2) | |
| 19 | M8 x 65 cap screw (2) | |
| 20 | Red spacer 10 x 35 (2) | |
| 21 | Top leg stop (2) | |
| 22 | Slider tube - XL - 19 x 275 | |
| | - STD - 19 x 245 | |
| 23 | Blue shock rubbers (8 per side) | |
| 24 | Black locator disc (7 per side) | |
| 25 | Centre locator plug | |
| 26 | Front shock leg – throttle side | |
| 27 | Front shock leg – brake side | |
| 28 | M5 x 30 cap screw (2) | |
| 29 | M5 nylock (2) | |
| 30 | M6 x 10 cap screw (2) | |
| 31 | Throttle lever | |
| 32 | Lower plug (2) | |
| 33 | Fork boots (2) | |
| 34 | Top slider bush (2) | |
| 35 | Lower slider bush (2) | |
| 36 | Spacer tube bumper rubber (2) | |
| 37 | Spacer tube 30mm ring (2) | |
| 38 | Bush spacer tube 30mm (2) | |
| 39 | 3.2 x 8 SS pop rivet (2) | |
| 40 | Brake cable | |

| ITEM | DESCRIPTION | |
|------|---------------------------------------|--|
| 41 | Brake drum | |
| 42 | M8 x 30 countersunk bolt (3) | |
| 43 | Brake shoe | |
| 44 | Brake hub | |
| 45 | Split pin | |
| 46 | Front end wheel spacer - 43mm | |
| 47 | Axle spacer | |
| | - XL – 75mm | |
| | - STD – 70mm | |
| 48 | 12 x 24 x 1.5 washer | |
| 49 | Brake shoe cam lever | |
| 50 | Cam lever | |
| 51 | 8 x 15 x 2.1 spring washer | |
| 52 | ¼ NF nylock | |
| 53 | Cable adjuster holder | |
| 54 | M6 nylock (2) | |
| 55 | Brake spacer 6.5 x 7 | |
| 56 | Brake hub holder spacer | |
| | - XL – 60 x 35 | |
| | - STD – 60 x 31.5 | |
| 57 | Hex bolt | |
| | - XL - M10 x 60 | |
| | - STD – M10 x 55 | |
| 58 | M10 nylock | |
| 59 | Axle bolt – M12 x 253 | |
| 60 | Rim | |
| 61 | Rim spacer | |
| | - XL – 56 x 17 x 12 | |
| | - STD – 68 x 17 x 12 | |
| 62 | XL – M8 x 35 cap screw (2) | |
| | STD – M8 x 50 hex bolt (imported) (2) | |
| 63 | Bearing 6003 DU (2) | |
| 64 | Mudguard | |
| 65 | Mudguard flap | |
| 66 | Tyre - XL – 18 x 8.5 x 8 | |
| | - STD – 16 x 6.5 x 8 | |
| 67 | Tube – 480 x 400 x 8 | |

AQUILLA ELBOW

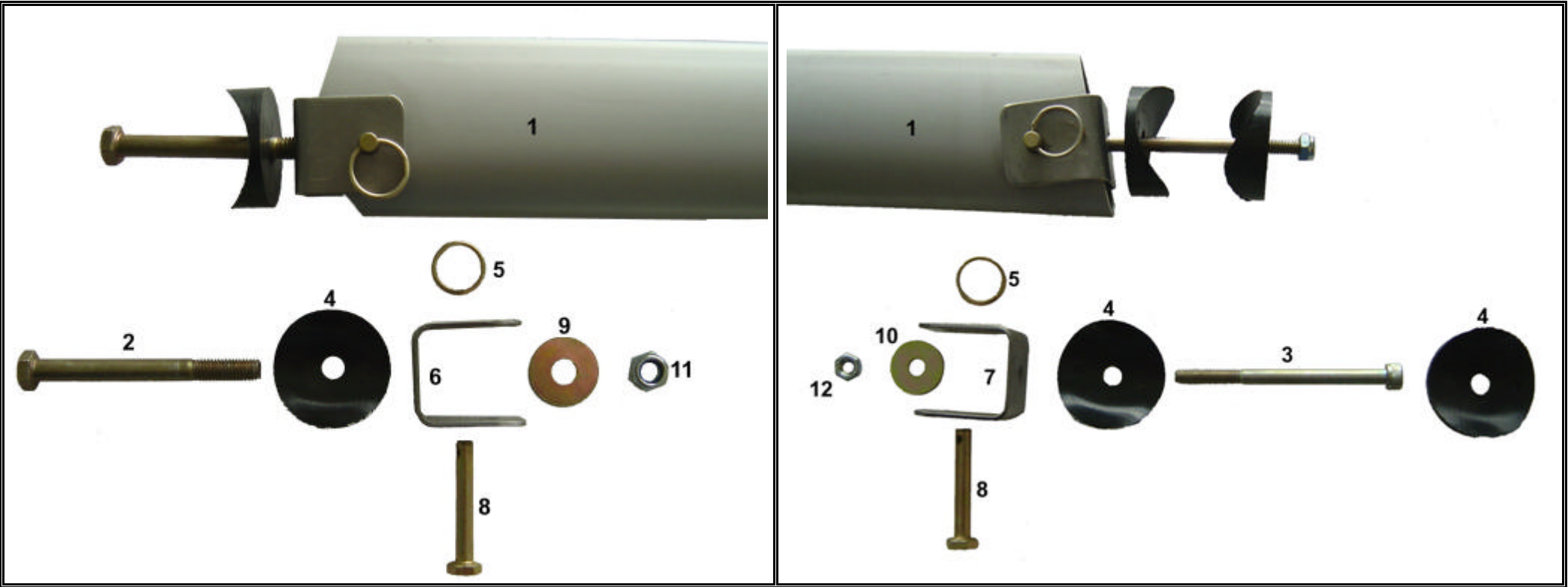


| ITEM | DESCRIPTION | |
|------|-----------------------|--|
| 1 | Elbow | |
| 2 | Bearing 6001 (2) | |
| 3 | M8 x 35 bolt (2) | |
| 4 | 8 x 17 x 2 washer (6) | |
| 5 | M8 nylock (3) | |
| 6 | Elbow clamp | |
| 7 | Light | |
| 8 | M6 nylock | |
| 9 | 6 x 16 x 1.6 washer | |
| 10 | Aerial bracket | |
| 11 | Saddle 8mm hole (2) | |
| 12 | U bracket 6mm hole | |
| 13 | 6 x 22 x 1.6 washer | |
| 14 | Aerial | |
| 15 | M8 x 80 bolt | |
| 16 | M6 x 80 bolt | |
| 17 | Elbow plug | |

AQUILLA AIRFOIL

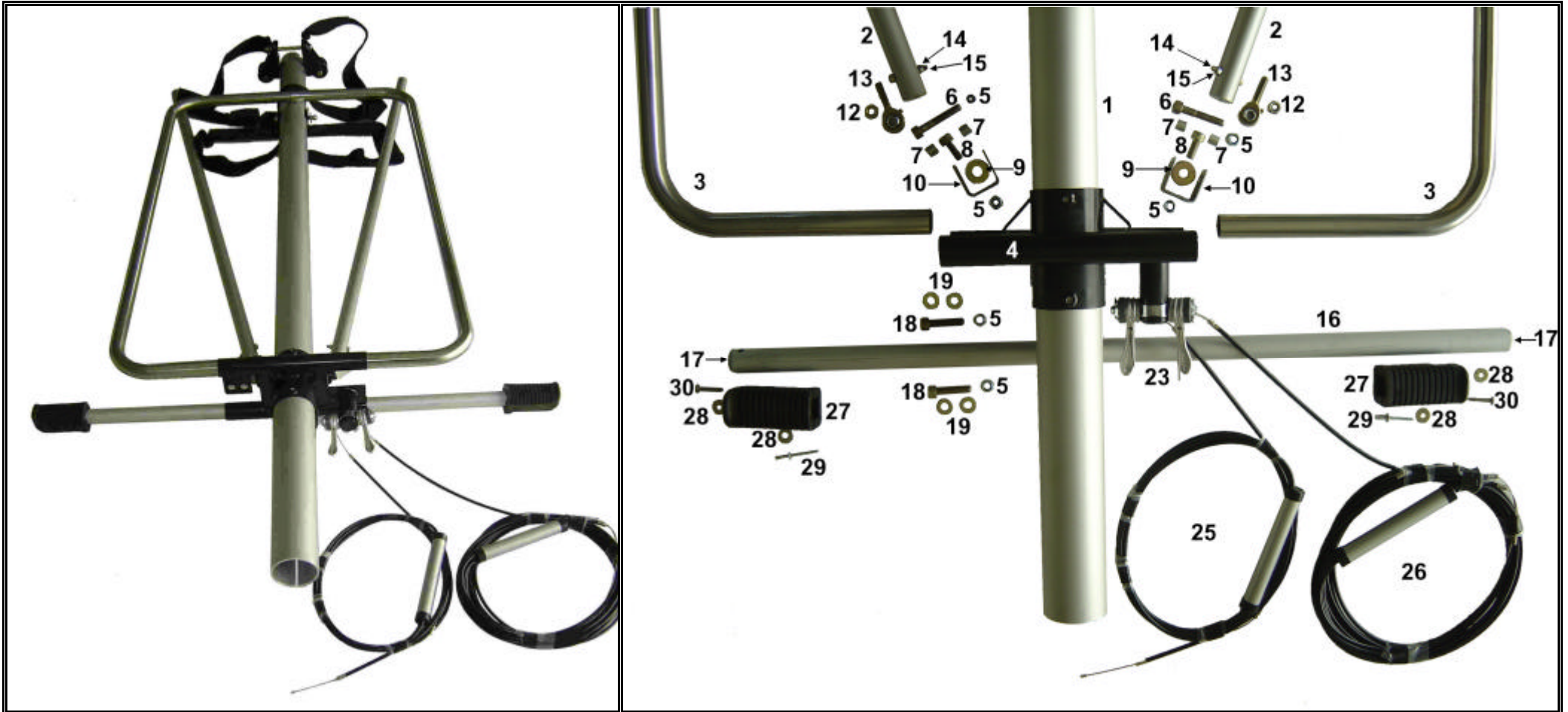
TOP

BOTTOM



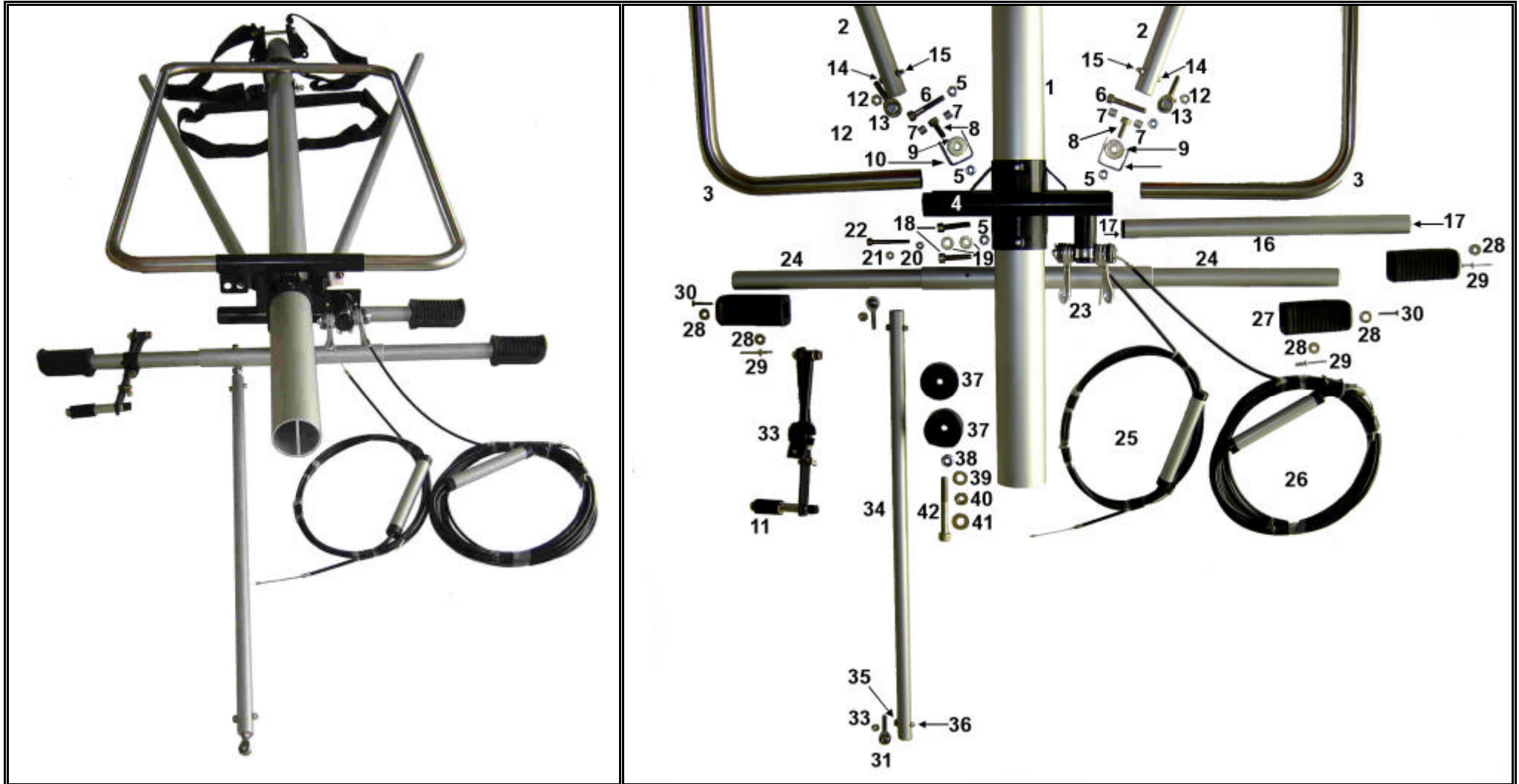
| ITEM | DESCRIPTION | |
|------|---------------------|--|
| 1 | Airfoil tube | |
| 2 | M8 x 80 hex bolt | |
| 3 | M6 x 80 bolt | |
| 4 | Saddle 8mm (3) | |
| 5 | Safety ring (2) | |
| 6 | U-bracket 8mm | |
| 7 | U-bracket 6mm | |
| 8 | Airfoil pin (2) | |
| 9 | 8 x 25 x 2 washer | |
| 10 | 6 x 22 x 1.6 washer | |
| 11 | M8 nylock | |
| 12 | M6 nylock | |

AQUILLA LOWER BOOM & SEAT BRACKET ASSEMBLY



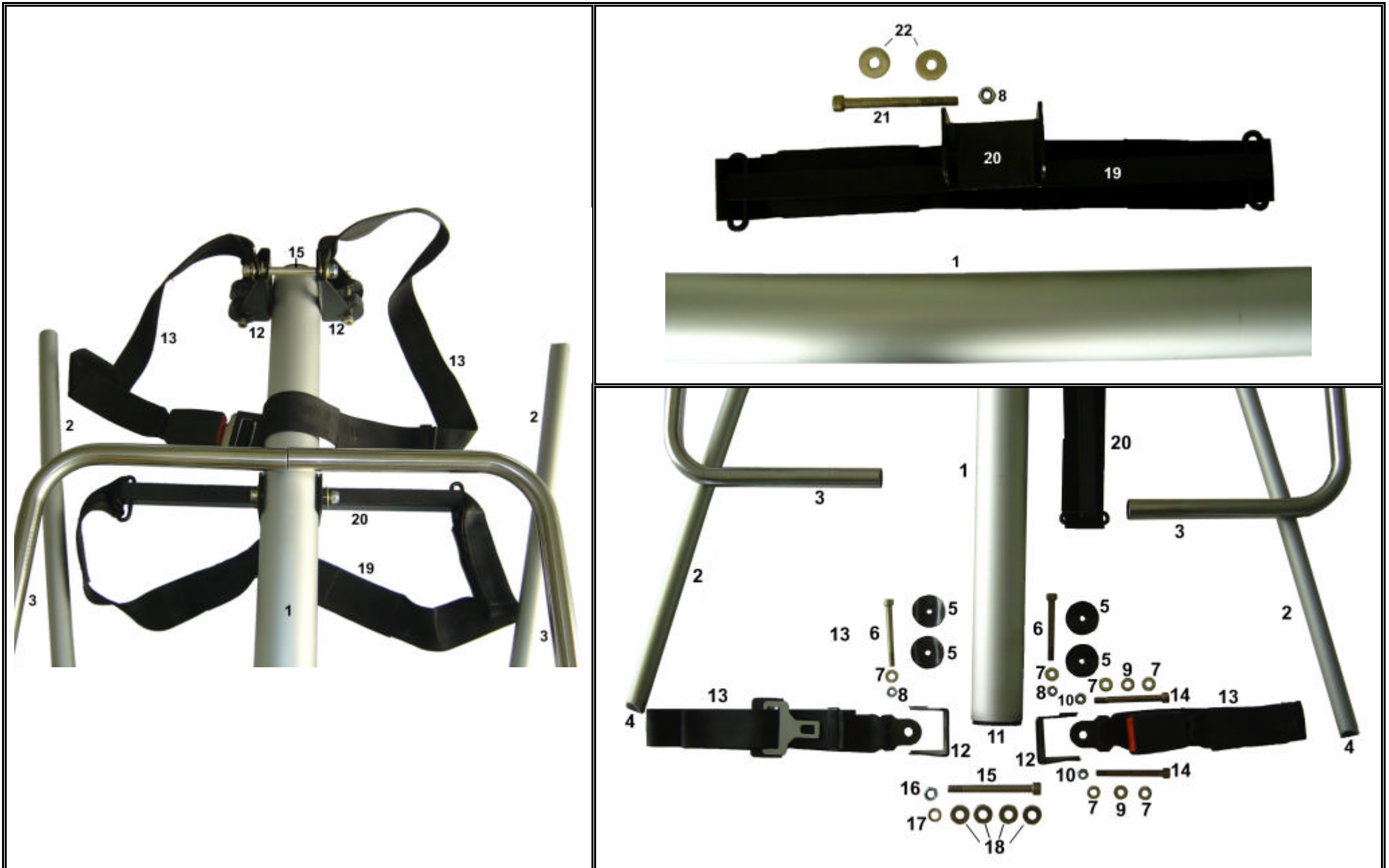
TYPES OF THROTTLE CABLES

- Standard
- Rear for 503 engine
- Rear (3 way) for 582 engine
- Standard 3 way (foot and oil feed)
- Three way front, 2 way back (foot, passenger, cruise control)
- Three way front, 3 way back (foot, passenger, cruise control, oil feed)



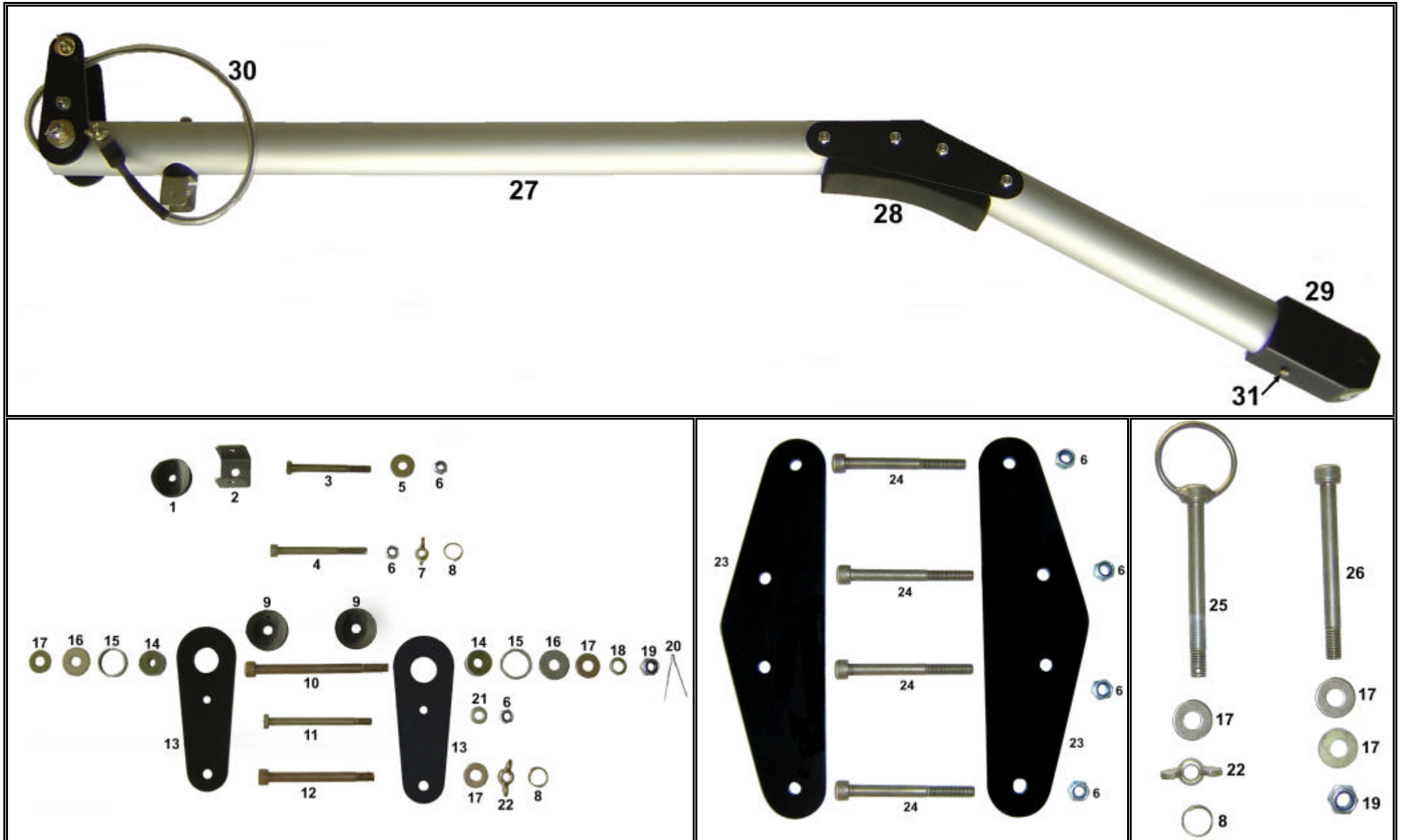
| ITEM | DESCRIPTION | |
|------|--------------------------|--|
| 1 | Boom | |
| 2 | Drag link (2) | |
| 3 | Seat frame (2) | |
| 4 | Seat bracket | |
| 5 | M8 nylock (6) | |
| 6 | M8 x 45 bolt (2) | |
| 7 | Spacer (2) | |
| 8 | M8 x 20 bolt (2) | |
| 9 | 8 x 25 x 2 washer (2) | |
| 10 | 8mm U-bracket (2) | |
| 11 | Throttle rubber | |
| 12 | M8 nut (2) | |
| 13 | M8 rose joint (2) | |
| 14 | M5 x 35 bolt (2) | |
| 15 | M5 nylock | |
| 16 | Footstep | |
| 17 | End cap (2) | |
| 18 | M8 x 35 bolt (2) | |
| 19 | 8 x 17 x 2 washer (4) | |
| 20 | M6 nylock | |
| 21 | M6 nut | |
| 22 | M6 x 50 bolt | |
| 23 | Cruise control | |
| 24 | Rear steering footrest | |
| 25 | Choke cable | |
| 26 | Throttle cable | |
| 27 | Footrest rubber (2) | |
| 28 | 5 x 1.6 x 1.5 washer (4) | |
| 29 | Pop rivet (2) | |
| 30 | Screws (2) | |
| 31 | M6 rose joint (2) | |
| 32 | M6 nut | |
| 33 | Rear pedal | |
| 34 | Rear steering rod | |
| 35 | M5 x 25 bolt | |
| 36 | M5 nylock | |
| 37 | Saddle 10 mm (2) | |
| 38 | M10 nylock | |
| 39 | 10 x 20 x 1 washer | |
| 40 | M10 nylock | |
| 41 | 10 x 25 x 2 | |
| 42 | M10 x 80 bolt | |

AQUILLA LOWER BOOM, TANK BRACKET & SEAT BELT ASSEMBLY



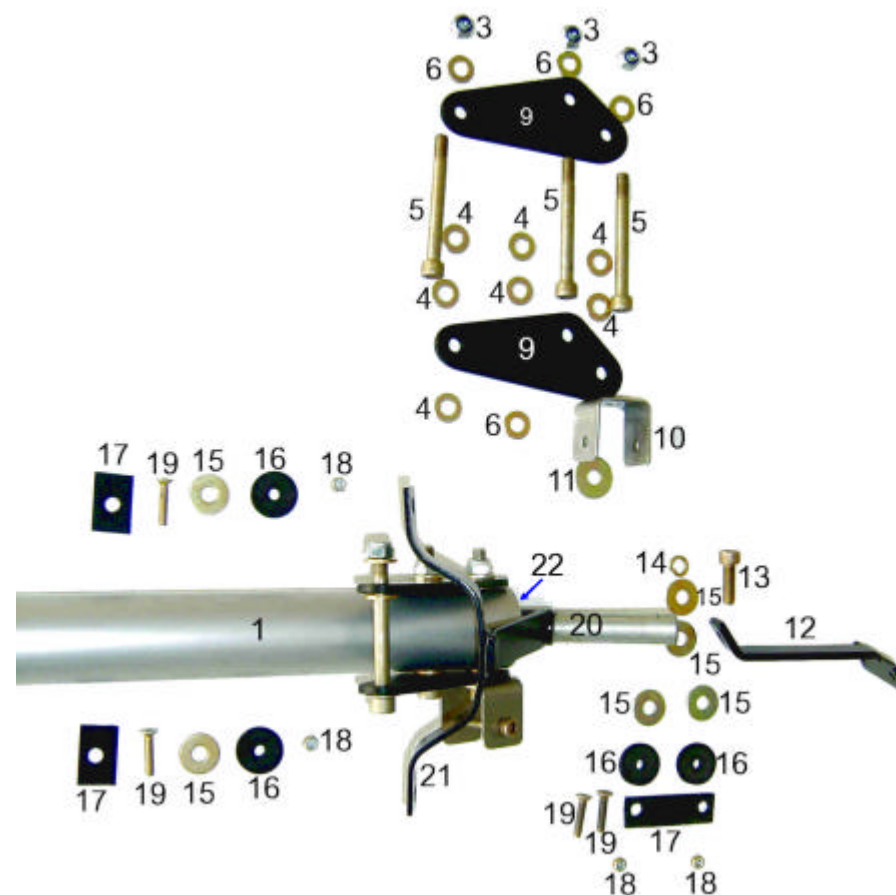
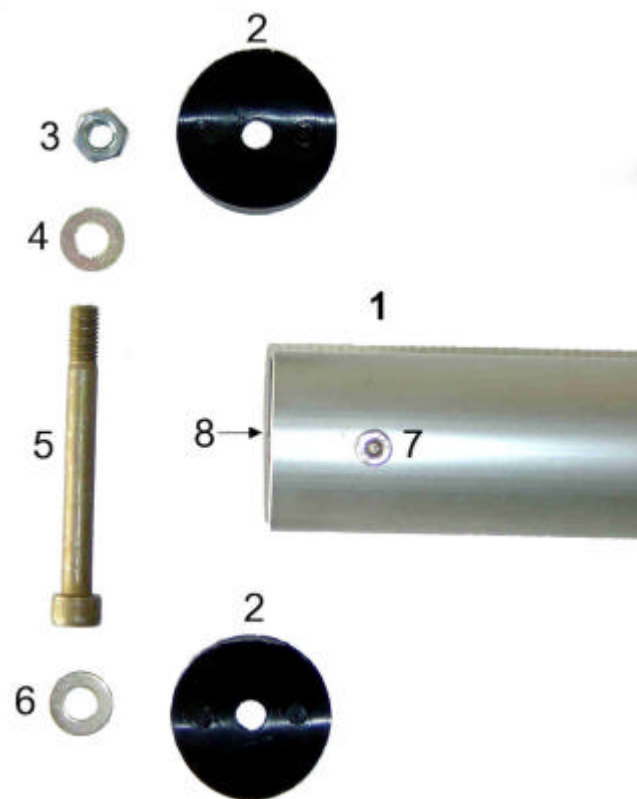
| ITEM | DESCRIPTION | |
|------|---|--|
| 1 | Boom | |
| 2 | Drag links (2) | |
| 3 | Seat frame (2) | |
| 4 | Drag link bush (2) | |
| 5 | Saddles 8mm (4) | |
| 6 | M8 x 75 bolt (2) (503 & 582) | |
| 6 | M8 x 90 bolt (2) (912) | |
| 7 | 8 x 17 x 2 washer (503 & 582) (6) (912) (8) | |
| 8 | M8 nylock (503 & 582) (2) (912) (4) | |
| 9 | 8 x 17 x 2 washer (6) | |
| 10 | M8 nut (2) | |
| 11 | Boom end plug | |
| 12 | Lower pylon bracket (2) | |
| 13 | Seat belt | |
| 14 | M8 x 84 cropped bolt (2) | |
| 15 | M10 x 100 bolt | |
| 16 | M10 nylock | |
| 17 | M10 spring washer | |
| 18 | 10 x 25 x 2 washer (4) | |
| 19 | Tank bracket strap | |
| 20 | Tank bracket | |
| 21 | M8 x 90 bolt | |
| 22 | 8 x 35 x 2 washer (2) | |

AQUILLA PYLON



| ITEM | DESCRIPTION | |
|------|-----------------------------|--|
| 1 | Saddle 8mm hole | |
| 2 | U-bracket 8mm hole | |
| 3 | M8 x 80 hex bolt | |
| 4 | M8 x 90 bolt drilled | |
| 5 | 8 x 25 x 2 washer | |
| 6 | M8 nylock (7) | |
| 7 | 8mm wing nut | |
| 8 | Safety ring | |
| 9 | Saddle 10mm hole (2) | |
| 10 | M10 x 140 bolt | |
| 11 | M8 x 110 hex bolt | |
| 12 | Top hang bolt | |
| 13 | Hang plate (2) | |
| 14 | Hang point guide rubber (2) | |
| 15 | Pylon spacer (2) | |
| 16 | 10 x 32 x 3 washer (2) | |
| 17 | 10 x 25 x 2 washer (2) | |
| 18 | M10 spring washer | |
| 19 | M10 nylock | |
| 20 | Split pin | |
| 21 | 8 x 17 x 2 washer | |
| 22 | M10 wing nut (2) | |
| 23 | Pylon plates (2) | |
| 24 | M8 x 80 bolts (4) | |
| 25 | Pylon ring bolt | |
| 26 | M10 x 100 cropped bolt | |
| 27 | Pylon | |
| 28 | Pylon headrest pad | |
| 29 | Pylon block | |
| 30 | Inner safety cable | |
| 31 | M6 x 70 hex bolt | |
| 32 | M6 nut | |

AQUILLA REAR AXLE

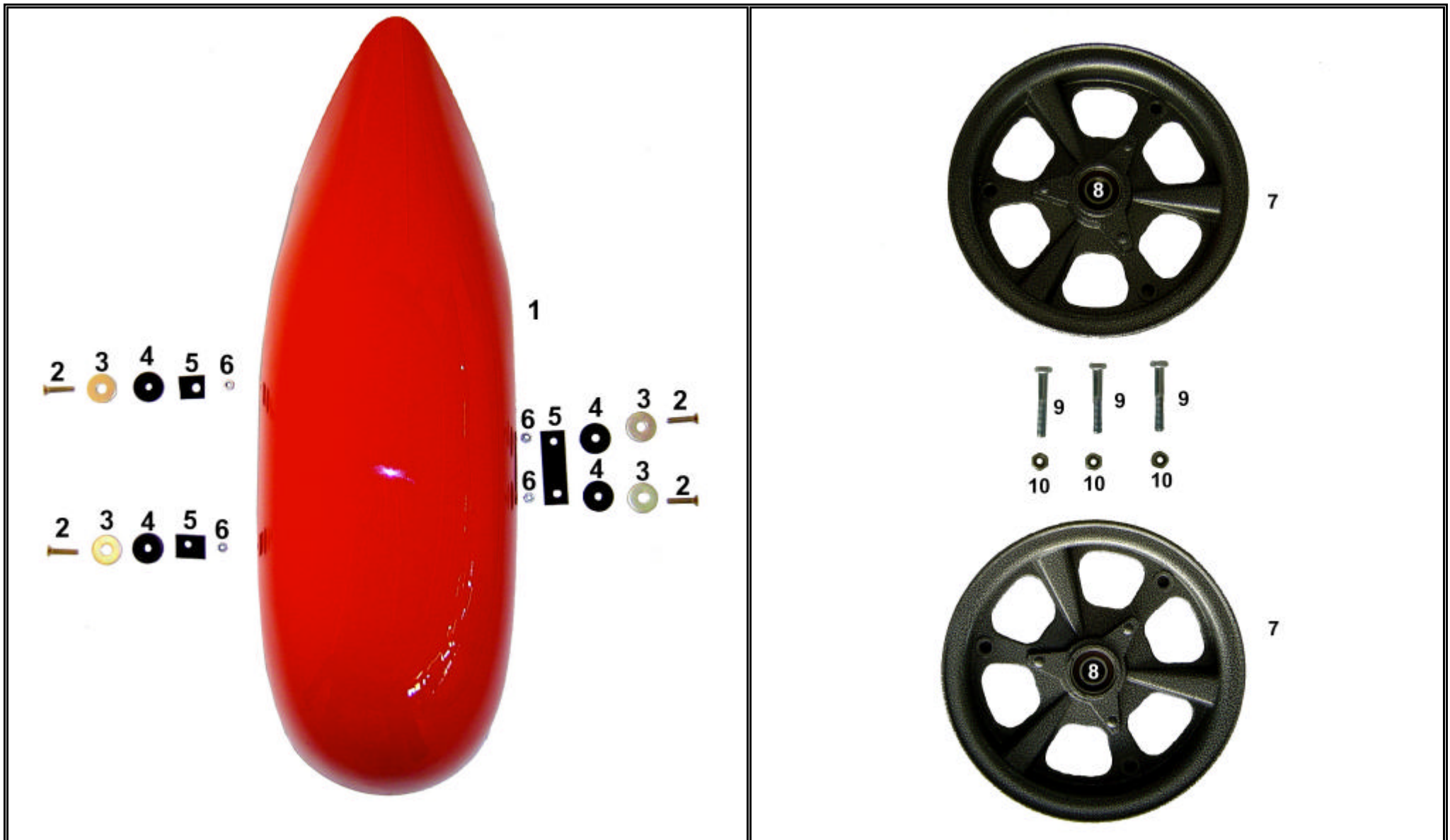


| ITEM | DESCRIPTION | |
|------|------------------------------|--|
| 1 | Axle tube | |
| 2 | M8 Saddle (2) | |
| 3 | M8 nylock (4) | |
| 4 | Washer 8 x 17 x 1 (8) | |
| 5 | M8 x 75 cropped (4) | |
| 6 | Washer 8 x 17 x 2 (5) | |
| 7 | M5 x 50 bolt | |
| 8 | Axle top plug | |
| 9 | Axle plates (2) | |
| 10 | 8mm U-bracket | |
| 11 | Washer 8 x 25 x 2 | |
| 12 | Outer mounting bracket | |
| 13 | M8 x 25 bolt | |
| 14 | 8mm spring washer | |
| 15 | Washer 8 x 22 x 1.6 (6) | |
| 16 | Tap washer 6x25 x4 (4) | |
| 17 | Rubber washer 6x25 (3) | |
| 18 | M5 nylock (4) | |
| 19 | M5 x 25 (4) countersunk bolt | |
| 20 | Rear axle | |
| 21 | Inner mudguard bracket | |
| 22 | Lower axle plug | |

AQUILLA REAR SHOCK



| ITEM | DESCRIPTION | |
|------|---|--|
| 1 | Complete rear shock & airfoil cover | |
| 2 | Complete rear shock | |
| 3 | Airfoil cover | |
| 4 | Shock end cap cover (2) | |
| 5 | M3 brass cheese head bolt & M3 nylock (2) | |
| 6 | Top aluminium plug | |
| 7 | Stainless steel slider tube | |
| 8 | Bumper stop | |
| 9 | Bottom plug for SS slider tube | |
| 10 | Yellow shock rubber (5 p/ side) | |
| 11 | Black bumper disc (4 p/side) | |
| 12 | Top compression tube plug | |
| 13 | Compression tube | |
| 14 | Bottom compression tube plug | |
| 15 | Shock over sleeve | |
| 16 | Top slider tube plug | |
| 17 | Bottom slider tube plug | |
| 18 | 6 x 12 x 1.5 washer (2) | |
| 19 | M5 x 10 bolt (2) | |



| ITEM | DESCRIPTION | |
|------|--|--|
| 1 | Rear Mudguard | |
| 2 | M5 x 25 countersunk cap screw bolt (4) | |
| 3 | 8 x 22 x 1.6 washer (4) | |
| 4 | 6 x 25 x 4 tap washer (4) | |
| 5 | Rubber spacer (3) | |
| 6 | M5 nylock (4) | |
| 7 | Rear rim | |
| 8 | Bearing 6003 (2) | |
| 9 | M8 x 50 hex bolt (3) | |
| 10 | M8 nylock (3) | |

AQUILLA FAIRING



| ITEM | DESCRIPTION | |
|------|------------------------------|--|
| 1 | Fairing | |
| 2 | Windscreen | |
| 3 | Chrome beading | |
| 4 | Airfoil mounting strap | |
| 5 | M5 x 16 countersunk bolt (2) | |
| 6 | 8 x 17 x 1 washer (2) | |
| 7 | M5 nylock (2) | |
| 8 | Large Aquilla sticker (2) | |
| 9 | Pinchweld | |
| 10 | Light | |
| 11 | 3mm brass screw (10) | |
| 12 | M3 nylock (10) | |
| 13 | 3 x 14 x 1.5 washer (10) | |
| 14 | Front mounting bush | |
| 15 | M5 x 30 bolt (2) | |
| 16 | M5 nylock (2) | |
| 17 | Pitout tube | |
| 18 | Foam support | |
| 19 | M6 x 25 bolt (2) | |
| 20 | 6 x 16 x 1.6 washer (4) | |
| 21 | M6 nylock (2) | |
| 22 | Side panel (2) | |
| 23 | Side pocket (2) | |
| 24 | Fairing mounting clamp (2) | |
| 25 | M6 x 30 bolt (2) | |
| 26 | M6 nylock (2) | |
| 27 | 6 x 16 x 1.6 washer (4) | |
| 28 | 6mm wing nut (2) | |
| 29 | Safety ring (2) | |
| 30 | 6 x 19 x 1.6 washer (2) | |
| 31 | Floor panel | |
| 32 | Wheel dust cover | |

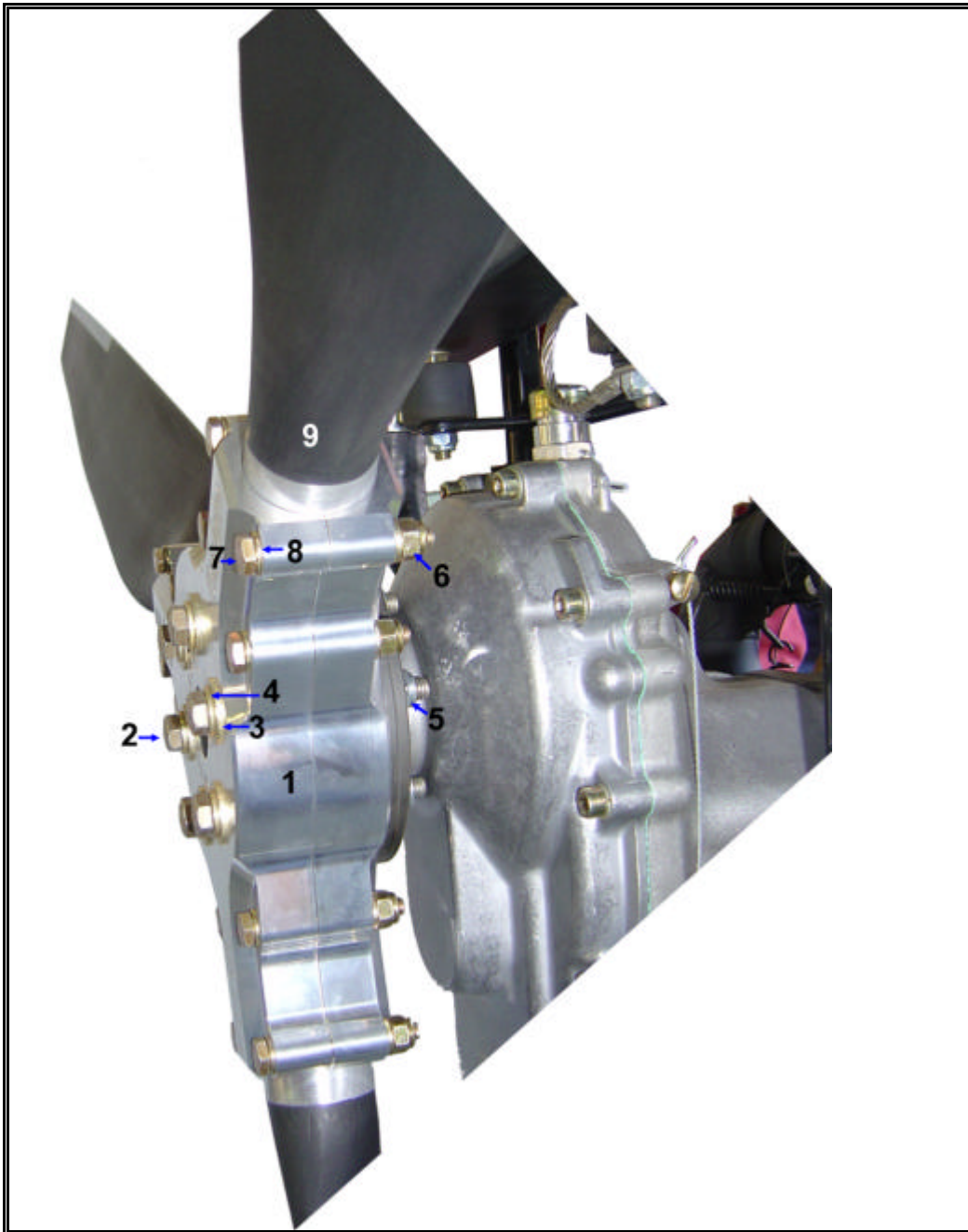
SEATS & PANNIERS



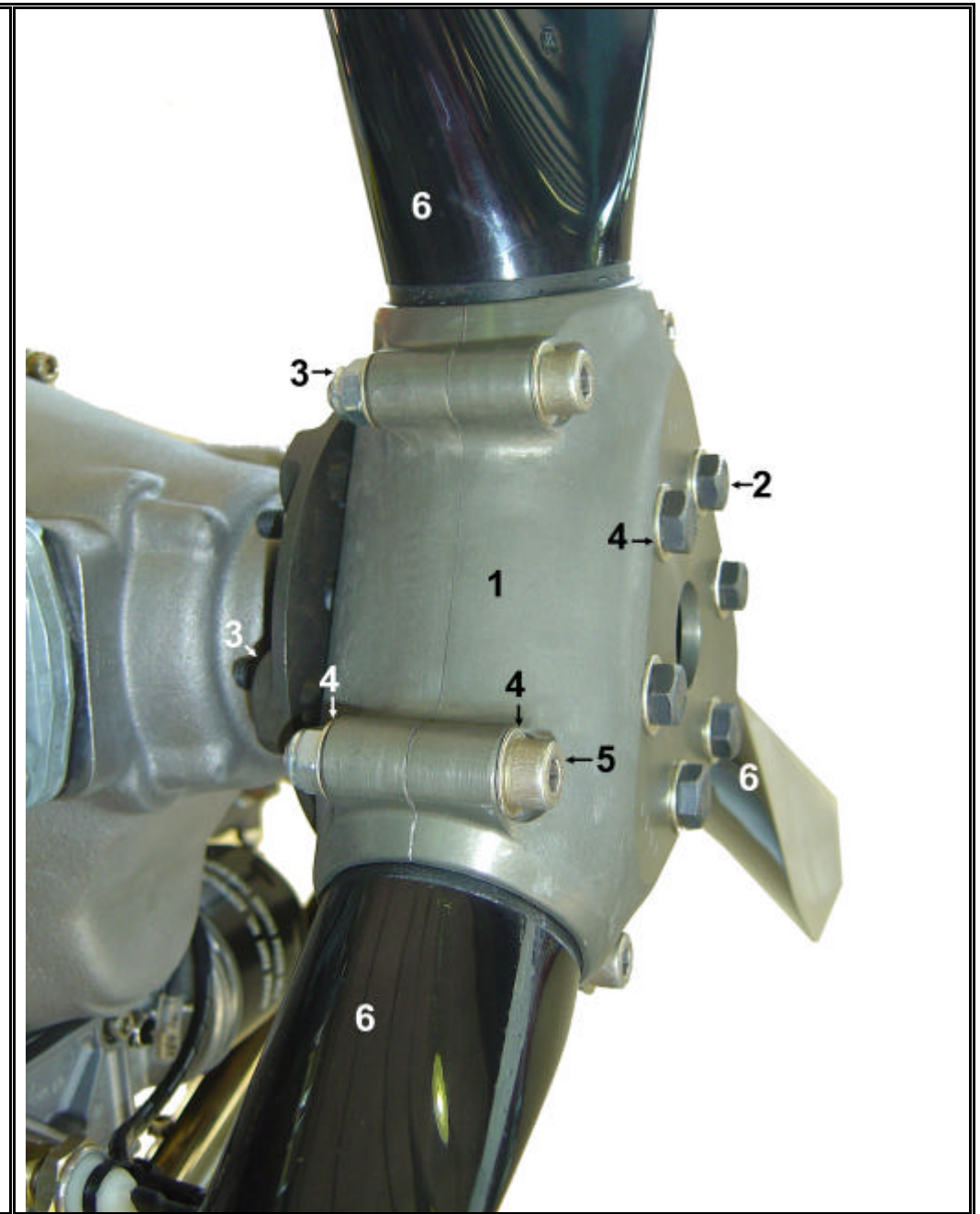
| ITEM | DESCRIPTION |
|------|------------------------------|
| 1 | Front seat |
| 2 | Rear seat |
| 3 | Wooden insert |
| 4 | Seat clips (4) |
| 5 | M6 x 30 countersunk bolt (4) |
| 6 | Safety strap (4) |
| 7 | Pannier (2) |

PROPELLERS

WARP



AERO

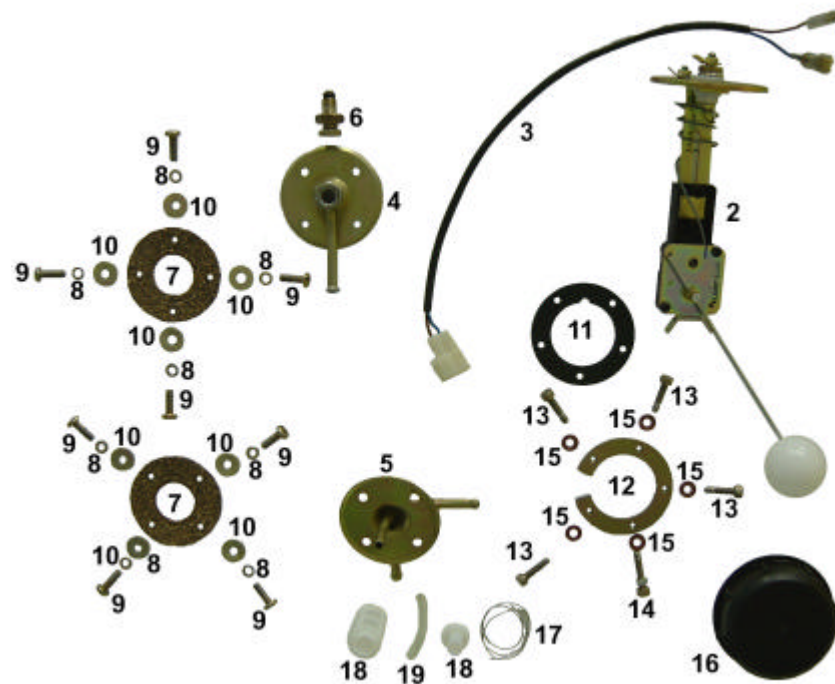
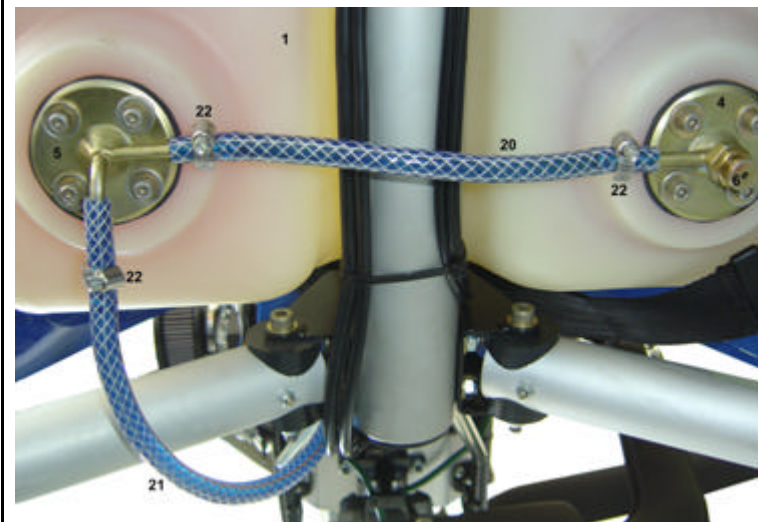
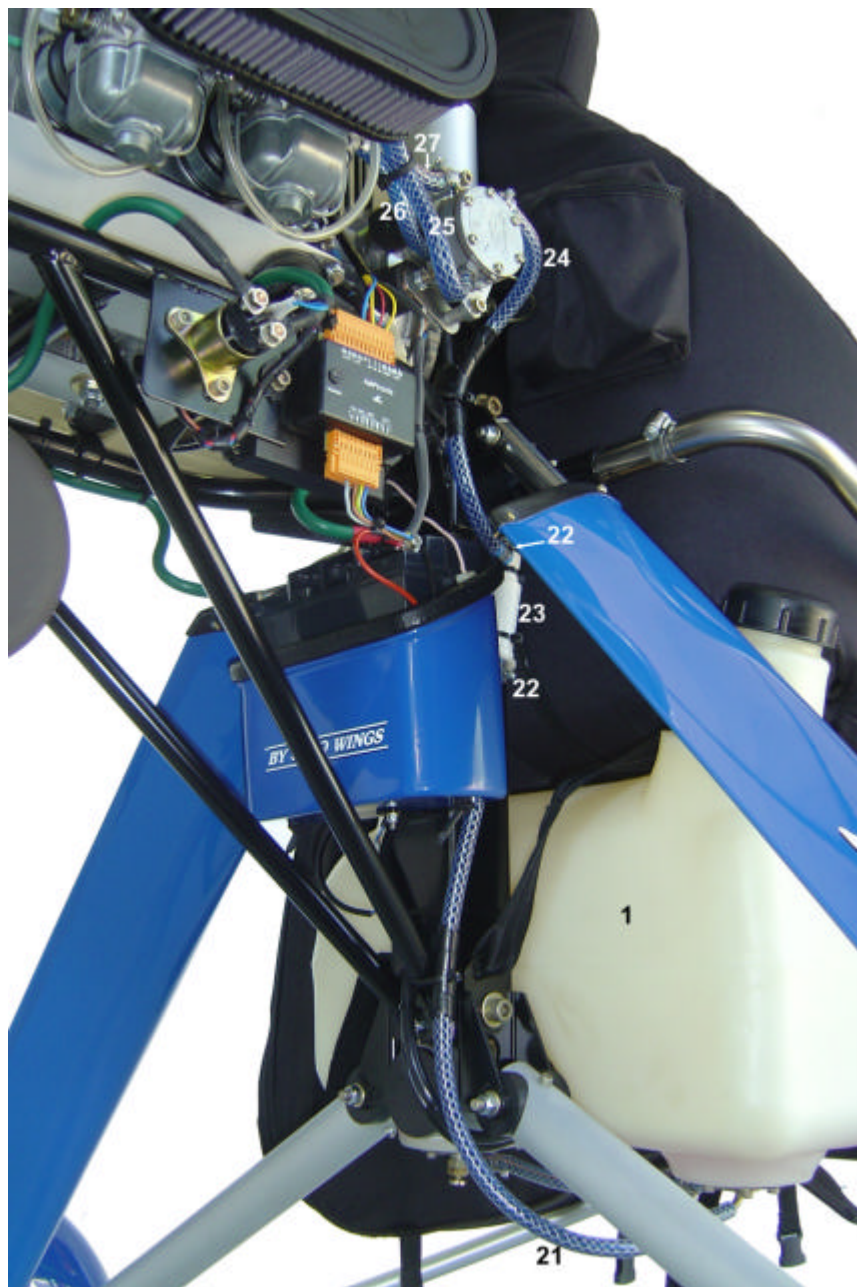


WARP

| ITEM | DESCRIPTION |
|------|-------------------------|
| 1 | Hub |
| 2 | M8 x 75 (6) |
| 3 | 8 x 22 x 1.6 washer (6) |
| 4 | 8 x 17 x 1.6 washer (6) |
| 5 | M8 nylock (6) |
| 6 | ¼ " nylock (12) |
| 7 | ¼ " clamping bolts (12) |
| 8 | ¼" washer (24) |
| 9 | Blade (3) |

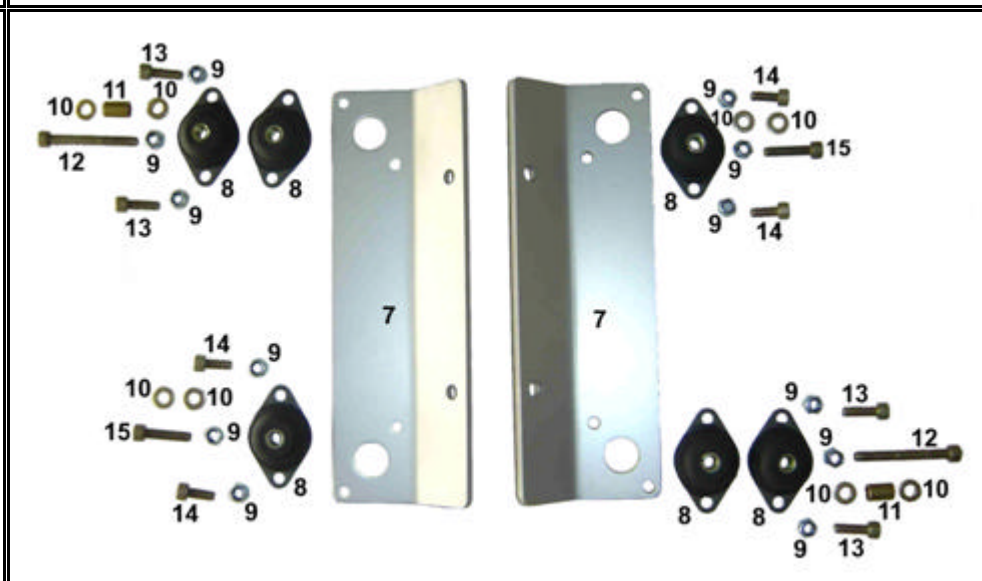
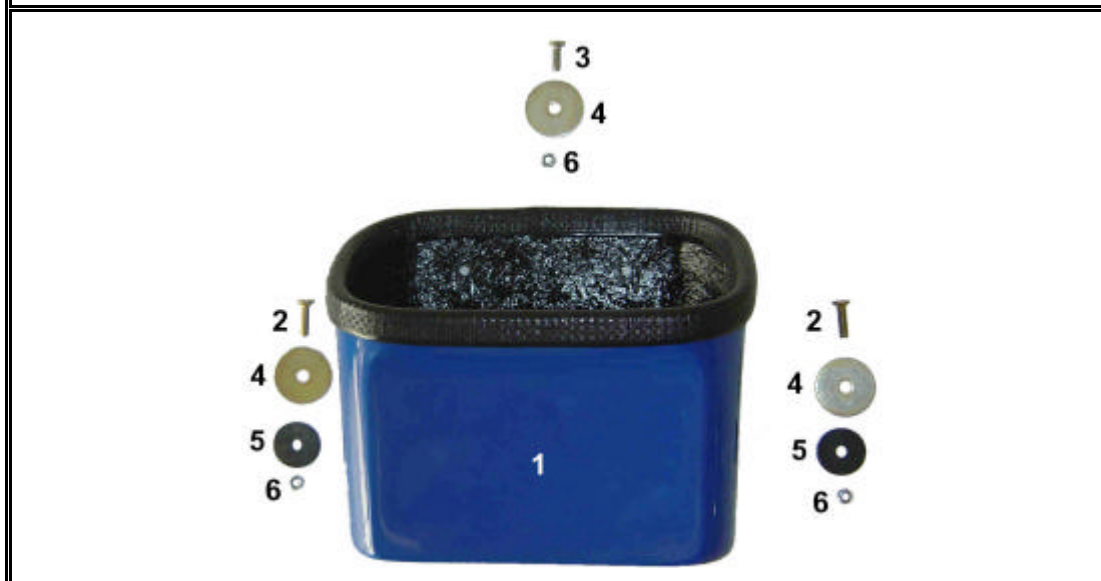
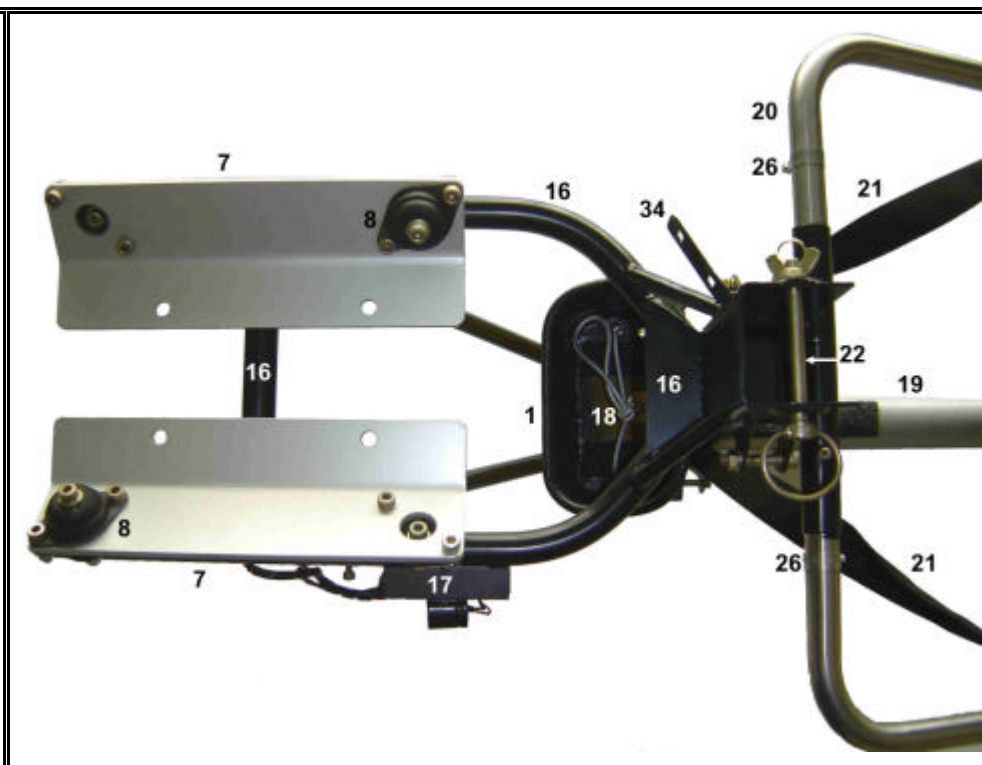
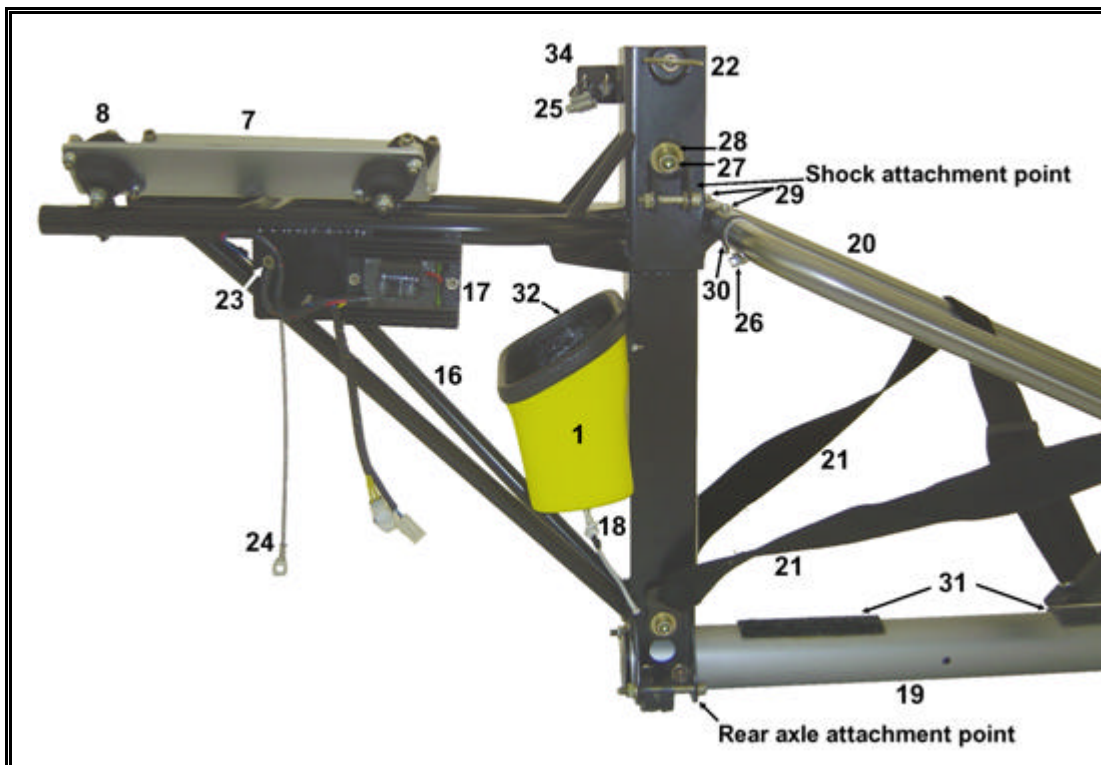
AERO

| ITEM | DESCRIPTION |
|------|--------------------------------------|
| 1 | Hub |
| 2 | M8 X 100 hex bolt 8.8 (6) (912) |
| 2 | M8 x 90 hex bolt 8.8 (6) (503 & 582) |
| 3 | M8 nylock (12) |
| 4 | 18 x 17 x 1 washer (18) |
| 5 | M8 x 50 crop bolt (6) |
| 6 | Blade (3) |

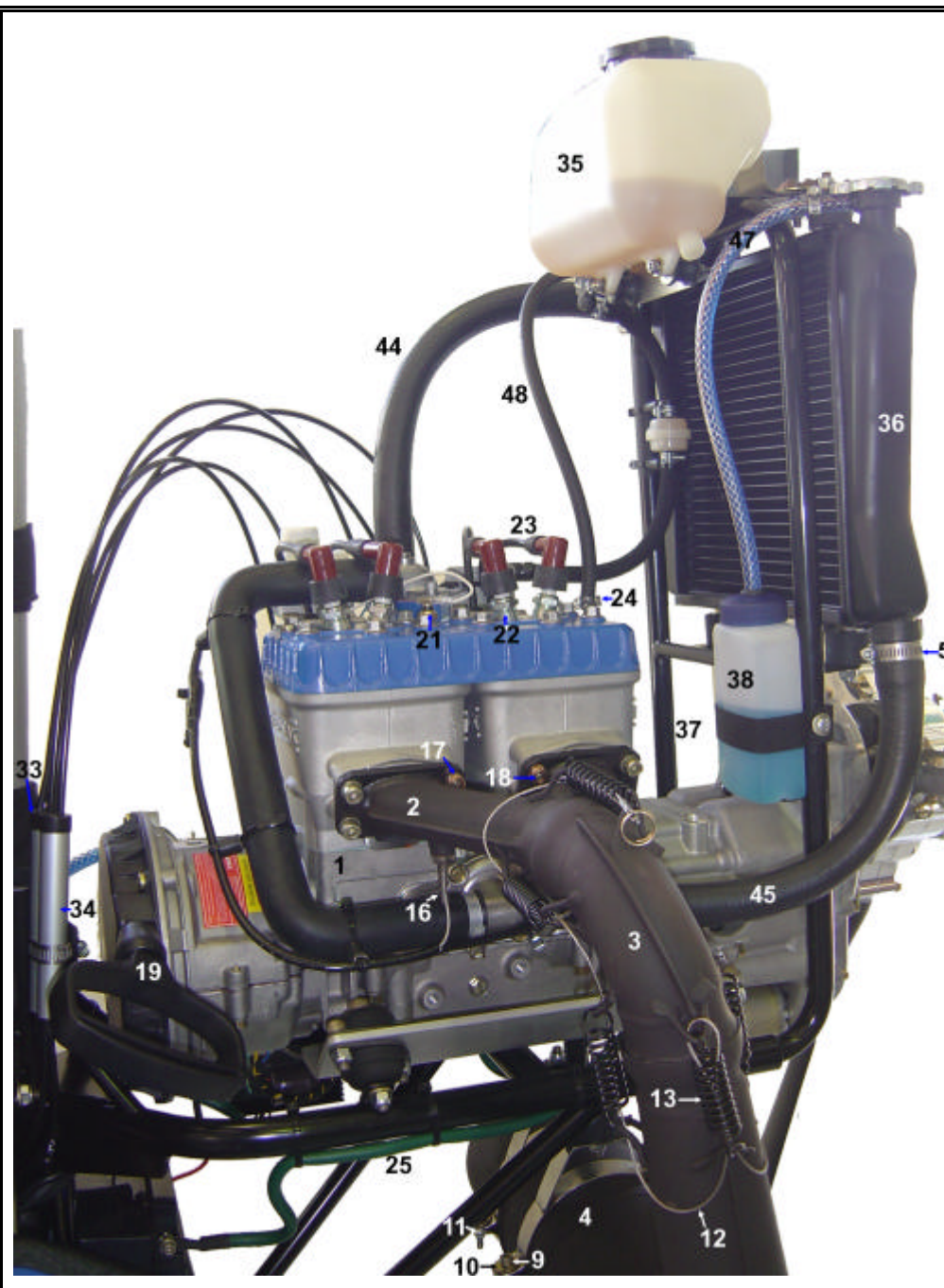
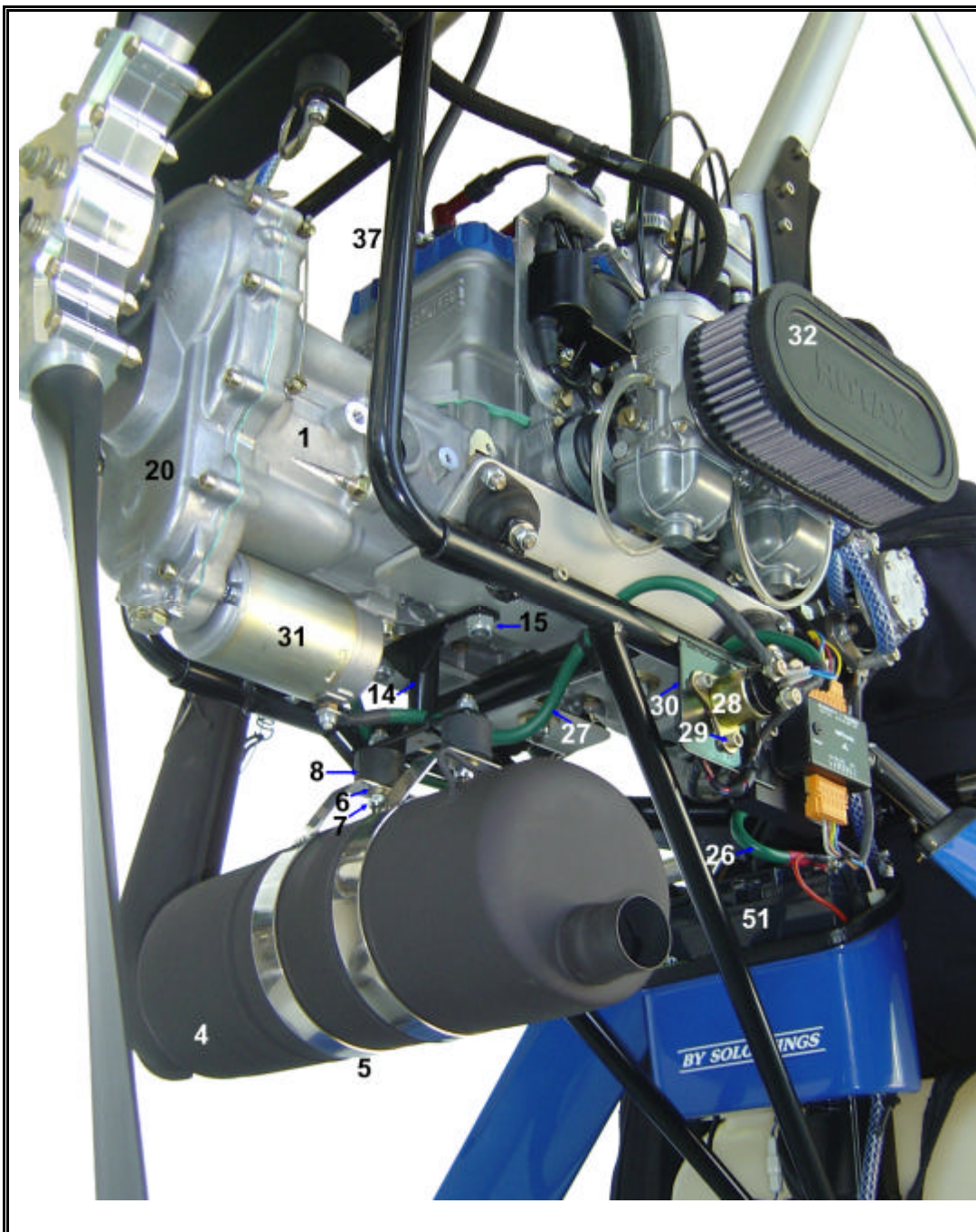


| ITEM | DESCRIPTION | |
|------|-------------------------------------|--------------|
| 1 | Tank | |
| 2 | VDO fuel sender unit | |
| 3 | Sender wiring harness | |
| 4 | Drain side tank fitting | |
| 5 | Outlet side tank fitting | |
| 6 | Drain valve | |
| 7 | Tank fitting gasket (2) | |
| 8 | M5 spring washer (8) | |
| 9 | M5 x 16 bolt (8) | |
| 10 | 5 x 16 x 1.5 washer (8) | |
| 11 | Fuel sender gasket | |
| 12 | Clamping ring | |
| 13 | M5 x 20 cap screw bolt (4) | |
| 14 | M5 x 25 cap screw bolt with 5mm nut | |
| 15 | M5 fibrous washer (5) | |
| 16 | Tank cap | |
| 17 | Stainless steel safety wire | |
| 18 | Outlet strainer (2) | |
| 19 | Spacer tubing | |
| 20 | Fuel hose 6.4 ID – 240 mm | |
| 21 | Fuel hose 6.4 ID – 630 mm | |
| 22 | Hose clamp ½" (12) | |
| 23 | Fuel filter | |
| 24 | Fuel hose 6.4 ID (Filter) | 330 mm (582) |
| | | 500 mm (503) |
| 25 | Fuel hose 6.4 ID (Front carb) | 245 mm (582) |
| | | 250 mm (503) |
| 26 | Fuel hose 6.4ID (Pulse) | 260 mm (582) |
| | | 485 mm (503) |
| 27 | Fuel hose 6.4 ID (Back) | 300 mm (582) |
| | | 430 mm (503) |
| 28 | 5mm nut | |

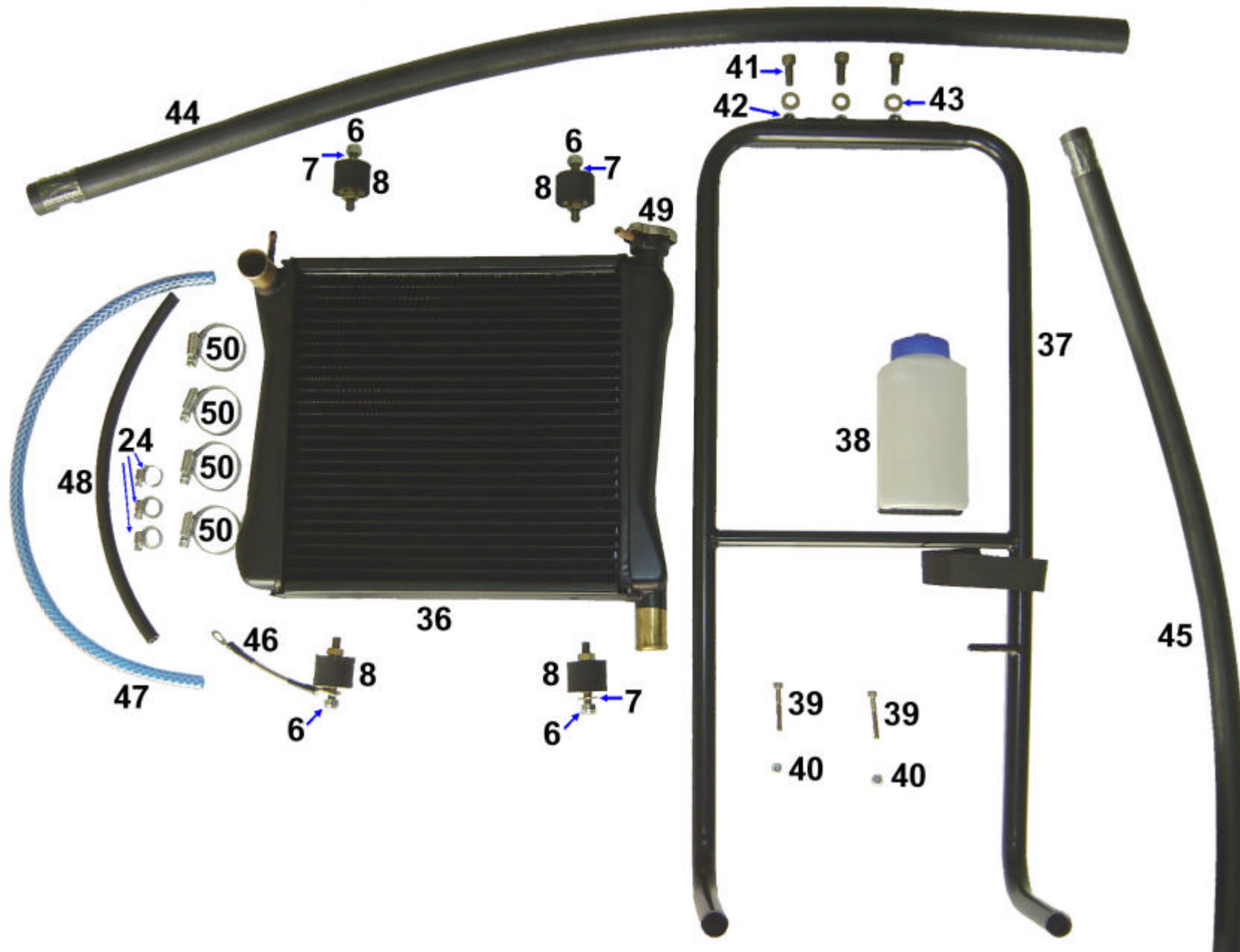
AQUILLA '582' ENGINE MOUNT



| ITEM | DESCRIPTION | |
|------|--|--|
| 1 | Battery box | |
| 2 | M5 x 20 countersunk bolt (2) | |
| 3 | M5 x 15 countersunk bolt | |
| 4 | 5 x 32 x 1 washer (3) | |
| 5 | 6 x 25 x 4 tap washer (2) | |
| 6 | 5mm nylock (2) | |
| 7 | Engine mounting plate (2) | |
| 8 | Engine mount rubber - '582' (6) '503' (5) | |
| 9 | 8mm nylock (12) | |
| 10 | 8 x 17 x 2 washer (8) | |
| 11 | Engine mount spacer 13 x 1.5 x 19 (2) | |
| 12 | M8 x 70 bolt (2) | |
| 13 | M8 x 25 bolt (4) | |
| 14 | M8 x 20 bolt (4) | |
| 15 | M8 x 35 bolt (2) | |
| 16 | Engine mounting bracket | |
| 17 | Regulator | |
| 18 | Battery box bung | |
| 19 | Boom | |
| 20 | Seat frame | |
| 21 | Seat belt | |
| 22 | Pylon ring bolt | |
| 23 | Starter solenoid | |
| 24 | Earth cable to engine | |
| 25 | Hose clamp HS16 (holds throttle & choke cable) | |
| 26 | Hose clamp HS12 (holds panniers) (2) | |
| 27 | M10 x 100 crop bolt | |
| 28 | 10 x 26 x 2 washers (2) | |
| 29 | M5 x 40 bolt (2) | |
| 30 | M5 nut (2) | |
| 31 | Carpet padding for tank | |
| 32 | Pinchweld | |
| 33 | 10mm nylock (2) | |

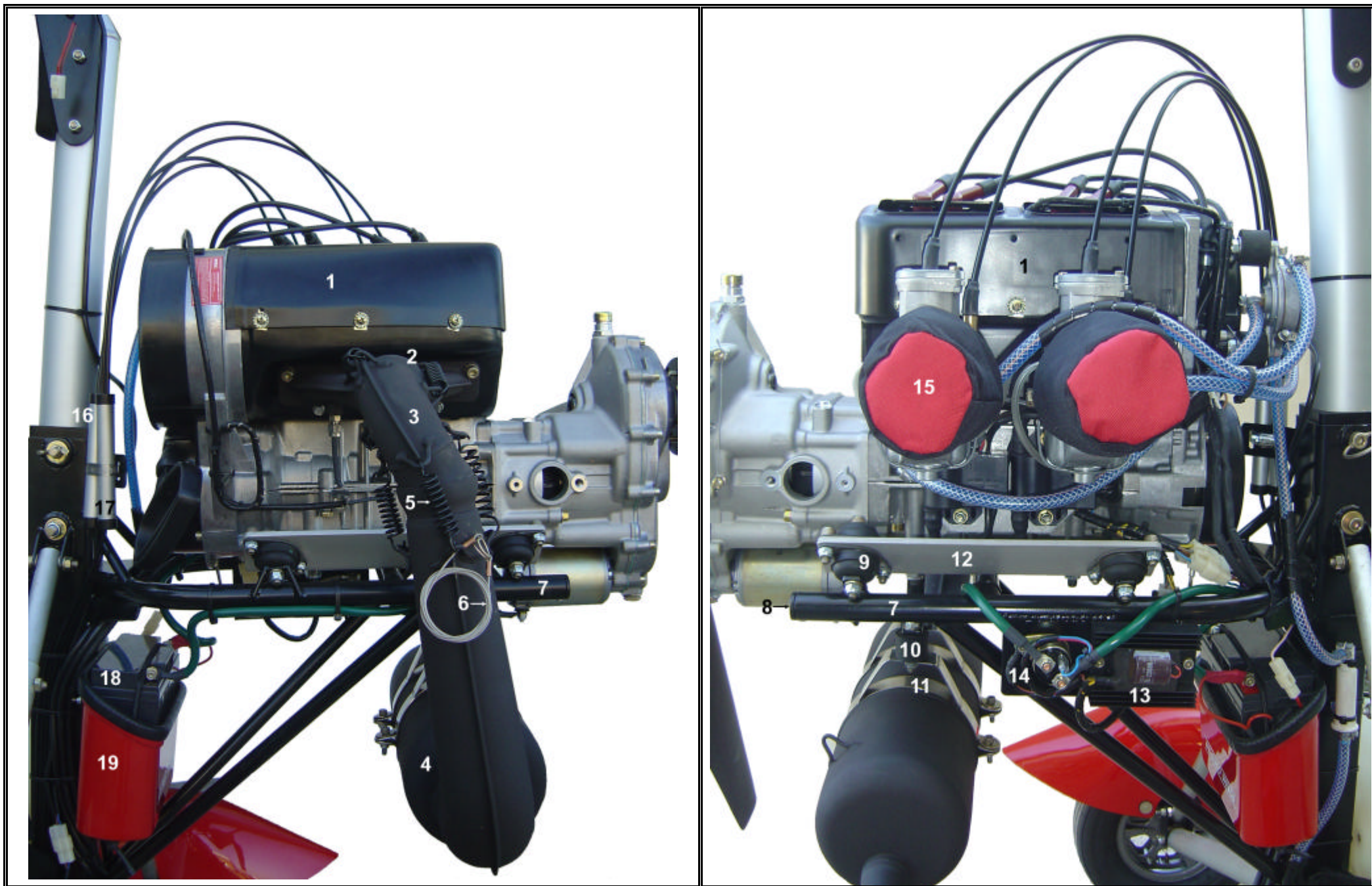


AQUILLA '582' RADIATOR



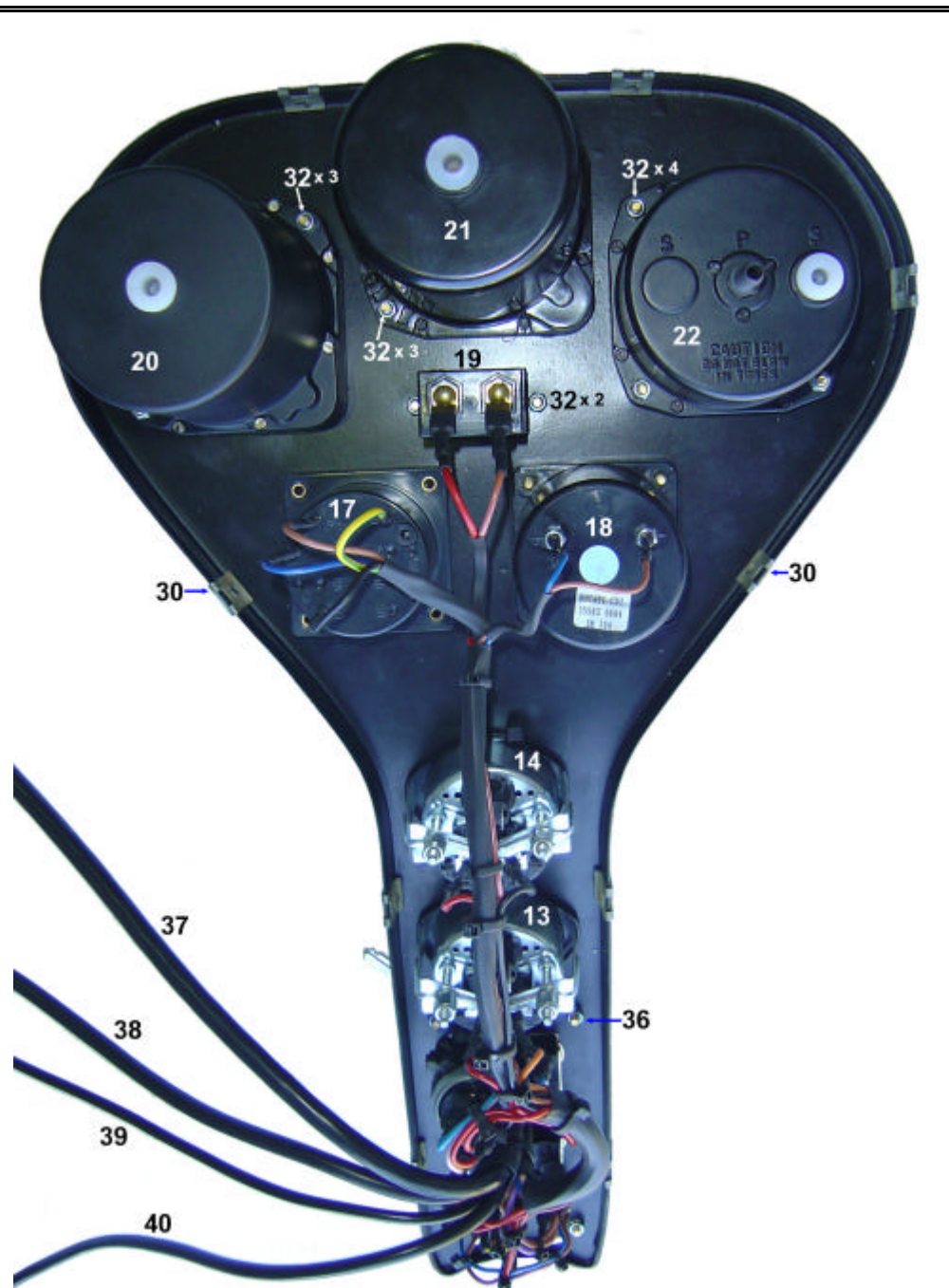
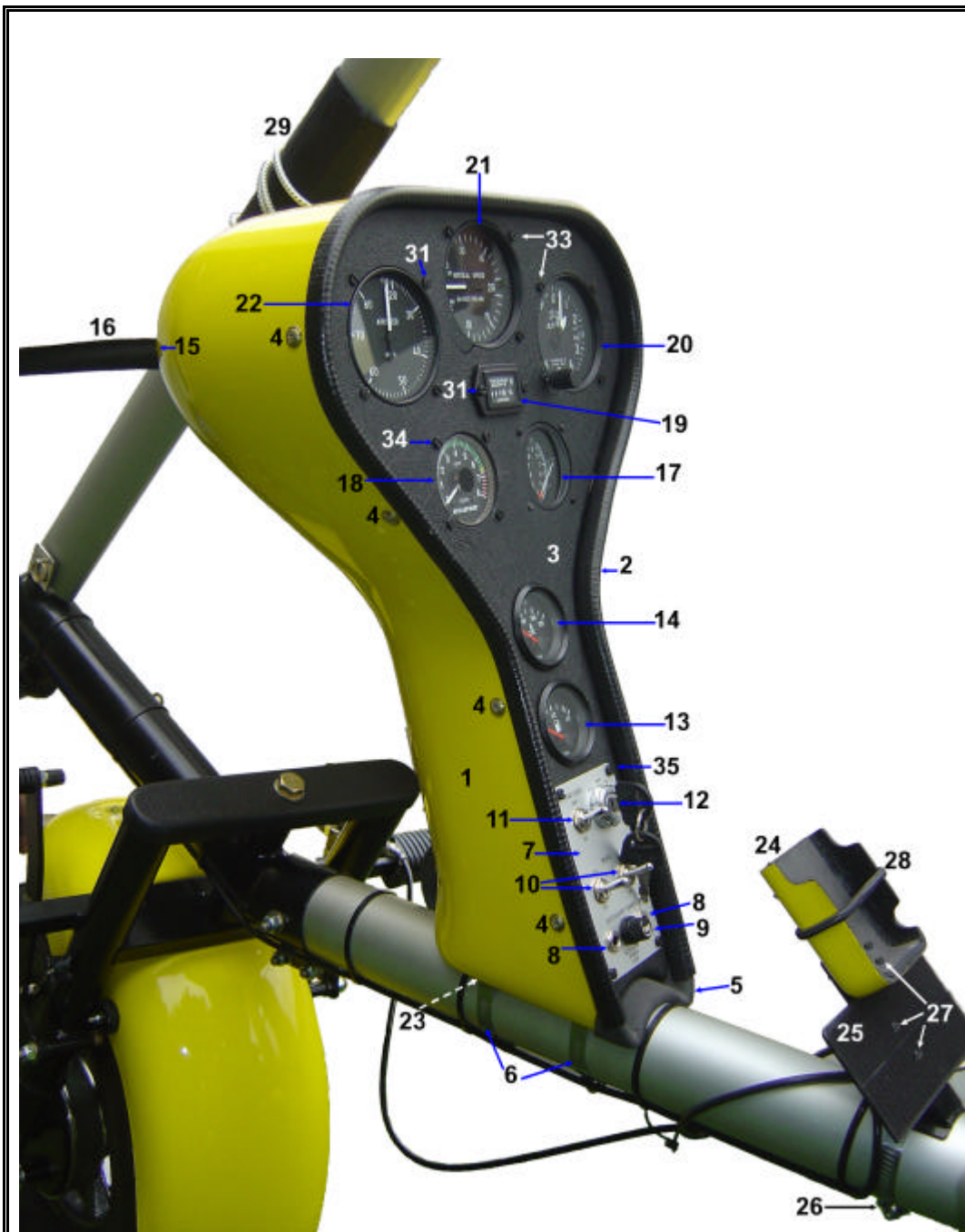
| ITEM | DESCRIPTION | |
|------|-------------------------------|--|
| 1 | Rotax 582 engine | |
| 2 | Exhaust manifold | |
| 3 | Exhaust elbow | |
| 4 | Exhaust main muffler | |
| 5 | Exhaust muffler clamp (2) | |
| 6 | M8 nylock (8) | |
| 7 | 8 x 17 x 1 washer (7) | |
| 8 | Anti vibration rubber (6) | |
| 9 | M5 x 25 bolt (2) | |
| 10 | 6 x 22 x 1.6 washer (4) | |
| 11 | M5 nylock (2) | |
| 12 | Exhaust spring safety cable | |
| 13 | Exhaust springs (6) | |
| 14 | Exhaust bracket | |
| 15 | M10 nylock (2) | |
| 16 | EGT M8 x 1.0 probe (2) | |
| 17 | M8 x 40 stud (2) | |
| 18 | M8 x 12 brass nut (2) | |
| 19 | Pull start | |
| 20 | Gearbox | |
| 21 | Water temperature sender unit | |
| 22 | Spark plug (4) | |
| 23 | Spark plug caps (4) | |
| 24 | Hose clamp ½" | |
| 25 | Battery earth cable | |
| 26 | Solenoid to battery cable | |
| 27 | Solenoid to starter cable | |
| 28 | Starter solenoid | |
| 29 | M6 x 16 bolt (2) | |
| 30 | M6 nylock (2) | |
| 31 | Electric start | |
| 32 | Air filter - Dual | |
| 33 | Throttle cable | |
| 34 | Choke cable | |
| 35 | Autolube | |
| 36 | Radiator | |
| 37 | Radiator bracket | |
| 38 | Radiator bottle | |
| 39 | M5 x 35 bolt (2) | |

| ITEM | DESCRIPTION |
|------|--------------------------------------|
| 40 | M5 nylock (2) |
| 41 | M8 x 20 bolt (3) |
| 42 | M8 nylock (3) |
| 43 | 8 x 12 x 1 washer (3) |
| 44 | Radiator hose 22 ID x 31 OD – 460 mm |
| 45 | Radiator hose 22 ID x 31 OD – 410 mm |
| 46 | Earth strap |
| 47 | Overflow pipe |
| 48 | Breather pipe |
| 49 | Radiator cap |
| 50 | Hose clamp HS16 (4) |
| 51 | Battery – BK12-18 |
| 52 | Battery – 12N 14A 3A |



| ITEM | DESCRIPTION | |
|------|-----------------------------------|--|
| 1 | Rotax 503 engine | |
| 2 | Exhaust manifold | |
| 3 | Exhaust Elbow | |
| 4 | Exhaust muffler | |
| 5 | Exhaust springs (6) | |
| 6 | Safety wire | |
| 7 | Engine mount bracket | |
| 8 | Engine mount bracket end plug (2) | |
| 9 | Engine mount rubbers (5) | |
| 10 | Exhaust rubbers | |
| 11 | Exhaust clamp | |
| 12 | Engine mounting plates (2) | |
| 13 | Rectifier | |
| 14 | Solenoid | |
| 15 | Air filter covers (2) | |
| 16 | Throttle cable | |
| 17 | Choke cable | |
| 18 | Battery | |

AQUILLA INSTRUMENT POD



| ITEM | DESCRIPTION | |
|------|----------------------------------|--|
| 1 | Large T pod | |
| 1 | Standard T pod | |
| 2 | Pinchweld | |
| 3 | Instrument face | |
| 4 | 4.8 x 16 self tapping screw (10) | |
| 5 | Foam | |
| 6 | Hose clamp HS40 (2) | |
| 7 | Instrument plate | |
| 8 | Auxiliary power point (2) | |
| 9 | Fuse | |
| 10 | Mag switch (2) | |
| 11 | Light switch | |
| 12 | Ignition & key | |
| 13 | Fuel gauge | |
| 14 | Water temperature gauge | |
| 15 | Grommet | |
| 16 | Pitout tube cover | |
| 17 | Dual EGT gauge | |
| 18 | Rev counter | |
| 19 | Hobbs meter | |
| 20 | Altimeter | |
| 21 | Vertical speed indicator | |
| 22 | Airspeed indicator | |
| 23 | Rubber strips | |
| 24 | Radio bracket | |
| 25 | Intercom mounting plate | |
| 26 | Hose clamp HS36 | |
| 27 | M5 x 16 countersunk bolt (2) | |
| 28 | 5mm bung | |
| 29 | Airfoil pad | |
| 30 | 4.8 speed nut (10) | |
| 31 | M4 x 20 brass screw (4) | |
| 32 | M4 nylock | |
| 33 | M4 x 25 brass screw | |
| 34 | M4 x 16 brass screw (4) | |
| 35 | M3 x 12 brass screw (4) | |
| 36 | M3 nylock (4) | |

| | | |
|----|----------------------------------|--|
| 37 | Standard – 7 Core cable | |
| | Blue – starter | |
| | Pink – Battery positive | |
| | Black – Water temperature sender | |
| | Orange – Fuel gauge sender | |
| | Brown – Earth | |
| | Purple – Mag 1 | |
| | Yellow / Green – Mag 2 | |
| 38 | 4 Core cable – Dual EGT gauge | |
| | Yellow – No. 5 | |
| | Brown – No. 4 | |
| | Blue – No. 3 | |
| | Black – No. 1 | |
| 39 | Standard - 2 Core cable | |
| | Blue – Light | |
| | Brown - Earth | |
| 40 | 2 Core cable - Rev counter | |
| | Blue – Positive | |
| | Brown - Earth | |

